



**NEW JERSEY
HISTORY &
HISTORIC
PRESERVATION
CONFERENCE**

**2026
PROGRAM BOOK
June 17th & 18th
MORRIS COUNTY**

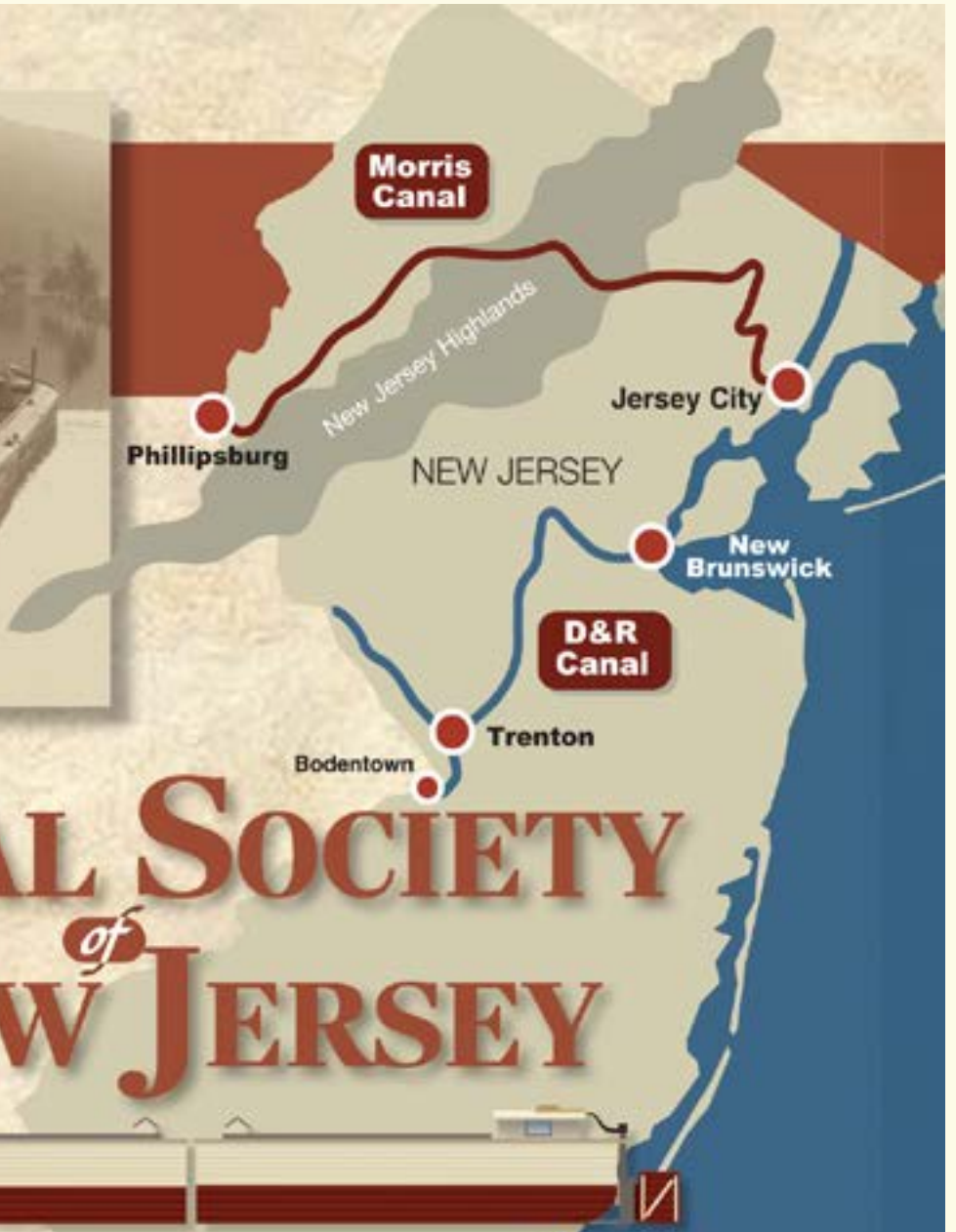


<https://www.njpreservationconference.org/>





Morris Canal
Dover – 1908



CANAL SOCIETY *of* NEW JERSEY



Morris Canal and Delaware & Raritan Canal

Preserving the History and the Heritage
of New Jersey's Towpath Canals



D&R Canal, South Bound Brook



Morris Canal, Wharton – 2024

canalsocietynj.org

Canal Society of New Jersey, 35 Waterview Boulevard, Parsippany, NJ 07054

TABLE OF CONTENTS

Welcome..... 3

Agenda..... 4

Sponsors..... 8

Marketplace Vendors..... 10

Featured Speakers..... 14

Sessions, Workshops, and Tours..... 17

Speakers..... 33

Poster Exhibitors..... 66

Journey Through Jersey..... 69

Conference Planning Committee..... 79



Replica Revolutionary War Cannon near Acorn Hall



Saint
Elizabeth
University



WELCOME

Welcome to the 2026 New Jersey History and Historic Preservation Conference!

We believe the Conference Planning Committee and our co-hosts have done a wonderful job of bringing this conference together. This year we are excited to present a panel discussion for our keynote address. Our three panelists, award winning preservation architect, podcaster, and advocate Nakita Reed; Erik Hein, the Executive Director of the National Conference of State Historic Preservation Officers; and Shaw Sprague, Vice President of Government Relations at the National Trust for Historic Preservation, will bring their perspectives on recent impacts to history and historic preservation especially in light of the ever changing policies at the federal level. We look forward to an engaging dialogue and a better understanding of the consequences at the local level.

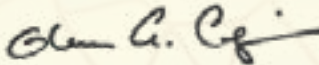
Day one tours and workshops again showcase innovative methods and highlight resources within our host county. We've expanded last year's very popular traditional finishes session into a hands-on full technical workshop this year. Our second workshop will be at a historic site fully exploring the fundamentals of collections and archives management. This year the conference offers two distinct tours. The first is a walking tour of Morristown featuring insights from experts at each tour stop. The second tour presents a unique look at two different landscapes, Willowood Arboretum and Bamboo Brook. This tour will include detailed discussions with landscape experts on their history and recent preservation efforts.

Once again, day two sessions provide a wide array of topics ranging from interpreting women's history, adapting historic homes for flood resiliency, developing design guidelines for communities, and updates on the New Jersey State Tax Credit program to sessions on archaeology and using heritage tourism to support preservation and uplift historic sites, among many others. Throughout the day, please visit the marketplace sponsors and exhibitors. Without their support, all our partners and of course you, our attendees, this conference would not be possible.

We look forward to seeing you throughout the conference and we hope that you find this year's offerings rewarding. Thank you for attending.




Peter Lindsay
Chair, Board of Trustees
New Jersey Historic Trust



Glenn A. Ceponis
Executive Director
New Jersey Historic Trust



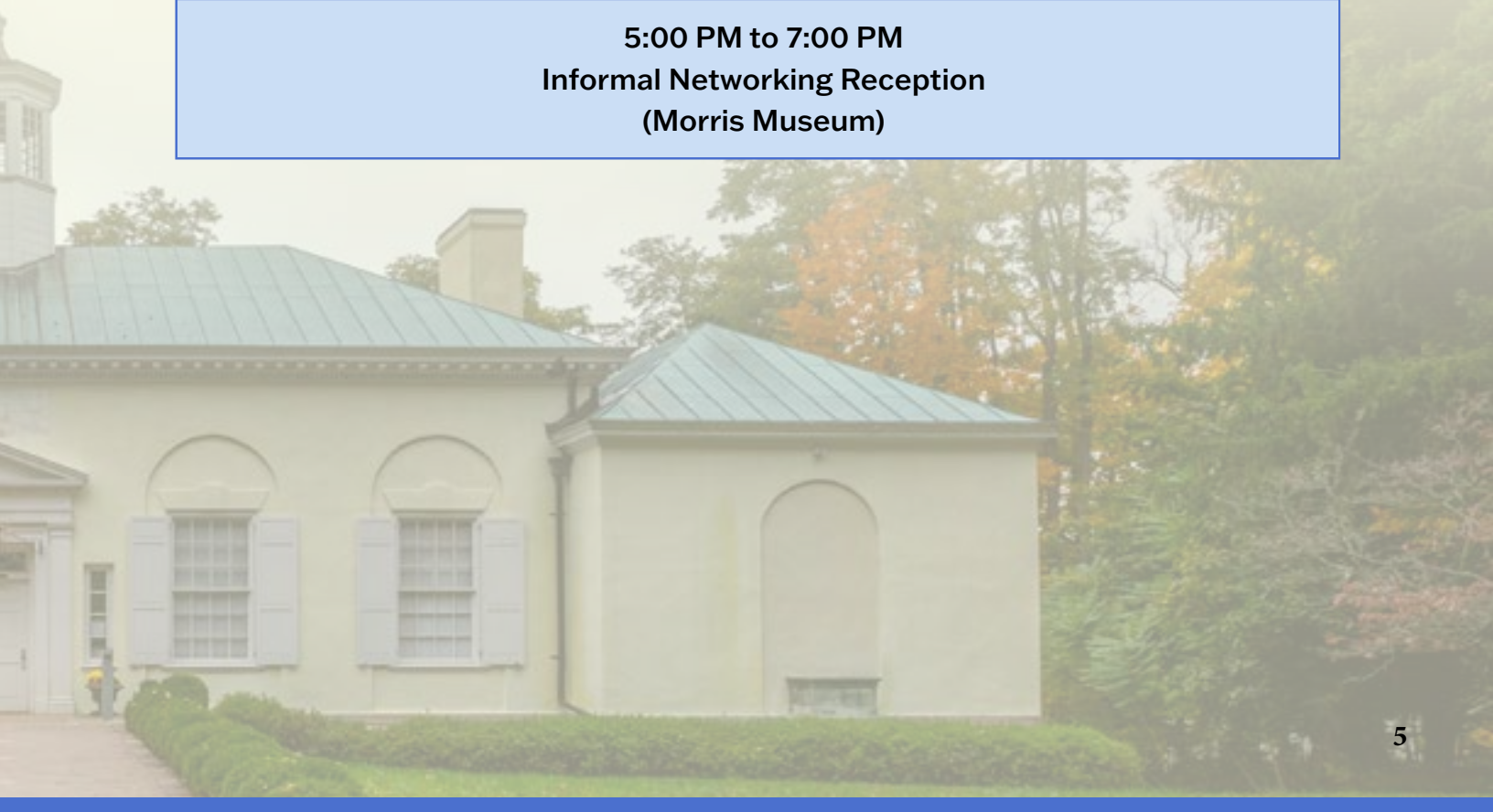
2026 CONFERENCE AGENDA

NEW JERSEY HISTORY & HISTORIC PRESERVATION

Key	Audience
AIA	Architects (continuing education credits approved)
AICP	Planners (continuing education credits approved)
AR	Archaeologists
CRM	Cultural Resource Management Professionals
HT	Heritage Tourism
H	Historians
HPC	Historic Preservation Commission Members
M/C	Municipal and County Officials
NP	Non-profits

Day 1 | Wednesday, June 17, 2026

Time and Location	Activity	Audience
12:00 PM to 2:00 PM Registration (On-Site at Workshop and Tour Locations)		
1:00 PM to 4:30 PM WILLOWOOD ARBORETUM	(T-1) Garden Perspectives: A Tour of Willowood Arboretum and Bamboo Brook	AIA, CRM, H, HT, M/C
1:00 PM TO 4:30 PM ACORN HALL	(T-2) Morristown Through Time: Revolution and Evolution	H, HT, NP
1:00 PM TO 4:30 PM METC EDUCATION ANNEX	(W-1) Practical Preservation Techniques for Traditional Finishes: A Hands-On Experience	AIA, CRM, HPC
1:00 PM TO 4:30 PM FOSTERFIELDS LIVING HISTORICAL FARM AUDITORIUM	(W-2) Keys to Collecting: An Introduction to Collections Management	H, M/C, NP
5:00 PM to 7:00 PM Informal Networking Reception (Morris Museum)		



Day 2 | Thursday, June 18, 2026

Time and Location	Activity	Audience
8:00 AM to 9:00 AM Registration, Breakfast, and Marketplace (Dolan Hall/Annunciation Center at Saint Elizabeth University, Room 130)		
9:00 AM to 9:15 AM DOLAN PERFORMANCE HALL	Welcoming Remarks	All
9:15 AM to 10:30 AM DOLAN PERFORMANCE HALL	Keynote Panel: The Dynamic Federal Landscape: Challenges and Opportunities in History and Historic Preservation	All, AIA
10:45 AM to 12:00 PM Choice of Educational Sessions		
DOLAN PERFORMANCE HALL	(S-1) High Water, High Stakes: Adapting Historic Homes for Flood Resilience	AIA, AICP, HPC, CRM, M/C
ROOM 213	(S-2) Engaging the Public with Preservation: 50 Years of Lessons	HT, H, NP, M/C
ROOM 129	(S-3) Is Your Museum Building Part of Your Collection?	AIA, CRM, NP, M/C
ROOM 109	(S-4) Living History in Practice: Special Considerations for Historical Reenactments	H, NP, M/C, HT
12:00 PM to 2:00 PM Lunch (Dolan Hall/Annunciation Center at Saint Elizabeth University, Room 130)		

Time and Location	Activity	Audience
2:00 PM to 3:15 PM Choice of Educational Sessions		
DOLAN PERFORMANCE HALL	(S-5) Developing & Applying Historic Design Guidelines in New Jersey	AIA, AICP, CRM, M/C, HPC
ROOM 109	(S-6) Historic Property Reinvestment Program: Assessing its Impact and Evolution	AIA, AICP, CRM, M/C, NP
ROOM 209	(S-7) The Revolutionary She: Preserving Women's History at Historic Sites	NP, H, M/C, CRM
ROOM 129	(S-8) America 250th & Heritage Tourism: Storytelling, Preservation & Community Growth	NP, M/C, HT
ROOM 218	(S-13) Lord Stirling Unearthed: Public Archaeology at a Lost Country Estate	AR, M/C, CRM
3:30 PM to 4:45 PM Choice of Educational Sessions		
ROOM 129	(S-9) The Morris Canal & Morris Canal Greenway in the 21st Century	AR, H, NP, M/C, AIA, AICP
ROOM 109	(S-10) Revolutionary New Jersey Revealed	AR, H, CRM
ROOM 218	(S-11) Honoring New Jersey Black History through Historical Markers	HT, NP
DOLAN PERFORMANCE HALL	(S-12) Complying with Law P.L. 2025, c. 149: Educating Historic Preservation Commission Members and the People You Serve	HPC, M/C, AICP
5:00 PM to 7:00 PM Informal Closing Networking Reception (Dolan Hall/Annunciation Center at Saint Elizabeth University, Room 130)		

2026 SPONSORS

Co-Hosts

Friends of New Jersey Heritage
New Jersey Historical Commission
New Jersey Historic Preservation Office
New Jersey Historic Trust

Beaux Arts

Canal Society of New Jersey
New Jersey Economic Development Authority

Second Empire

PULLMAN

Craftsman

CTS Group Architecture/Planning PA
Easton Architects
HMR Architects
Ocean County Cultural & Heritage Commission
Quaker Commercial Windows and Doors

Victorian

Innerglass Window Systems
Michael Calafati Architect, LLC
Morris County Park Commission
New Jersey Historic Preservation Office
Richard Grubb & Associates, Inc.
Terracon Consultants

Italianate

Connolly & Hickey Historical Architects, LLC
Clarke Caton Hintz, PC
Hunter Research, Inc.
Jablonski Building Conservation, Inc.
Middlesex County Division of History and Historic Preservation
New Jersey Historic Trust Board of Trustees
Scarinci Hollenbeck, LLC

Gothic

- Dewberry Engineers Inc.
- Fania Roofing
- Morris County Tourism Bureau
- Morris Museum
- Museum of Early Trades & Crafts
- Spartan Construction, Inc.

Georgian

- Ayres/Knuth Farm Foundation, Inc.
- Hometown History NJ, Inc.
- Jersey City Landmarks Conservancy
- League of Historical Societies of New Jersey
- Macculloch Hall Historical Museum
- Morris County Historical Society
- Newark Landmarks
- The Stickley Museum at Craftsman Farms
- United Railroad Historical Society of NJ

Poster Session

- Preservation New Jersey

MARKETPLACE VENDORS

Building Blocks Workshops

Teaching the Architectural Heritage of a
Community using LEGO
40 East Drive
Livingston, NJ 07039
swsaia@ail.com
<https://www.buildingblocksworkshops.com/>

Canal Society of New Jersey

35 Waterview Blvd
Parsippany, NJ 07054
973-292-2755
macgraphics2@gmail.com
<https://canalsocietynj.org/>



County of Passaic Department of Cultural & Historic Affairs

199 Totowa Road
Wayne, NJ 07470
973-706-6640
kellyr@passaiccountynj.org
<https://www.passaiccountynj.org/departments/cultural-and-historic-affairs>

CTS Group Architecture/Planning PA

17 Commerce Street
Chatham, NJ 07928
973-635-5900
lhilsenrath@ctsarch.com
<https://www.ctsarch.com/>

Fish Bowl Media

139 Bridge Ave, 11
Red Bank, NJ 07701
732-575-7044
derick@fishbowlmedia.co
<https://www.fishbowlmedia.co/>

Easton Architects

20 West 44th Street, Suite 604
New York, NY 10036
212-779-9570
peaston@eastonarch.com
<https://eastonarch.com/>

HMR Architects

24 N. Main Street
Pennington, NJ 08534
609-452-1070
reiss@hmr-architects.com
<https://hmr-architects.com/>



Innerglass Window Systems

15 Herman Drive
Simsbury, CT 06070
860-214-5765
Kimber@stormwindows.com
<https://stormwindows.com/>

Journey Through Jersey

101 South Broad Steet
Trenton, NJ 08608
609-948-0216
Info@journeythroughjersey.com
<https://www.journeythroughjersey.com>

Morris County Heritage Commission

PO Box 900
Morristown, NJ 07963
973-829-8117
abroschart@co.morris.nj.us
<https://www.morriscountynj.gov/Departments/Heritage-Commission>

Morris County Office of Planning & Preservation

30 Schuyler Place, 4th Floor
Morristown, NJ 07960
973-829-8143
aercan@co.morris.nj.us
<https://www.morriscountynj.gov/Departments/Planning-and-Preservation>

Morris County Park Commission

PO Box 1295
300 Mendham Road
Morristown, NJ 07962-1295
973-326-7615
dlanza@morrisparks.net
<https://www.morrisparks.net/>

My Local History

PO Box 1021
Secaucus, NJ 07096
John@MyLocalHistory.com
<https://mylocalhistory.com/>

New Jersey Cultural Trust

225 West State Street, 4th Floor
Trenton, NJ 08608
609-777-3657
avery.wehrs@sos.nj.gov
<https://nj.gov/state/culturaltrust/>

New Jersey Economic Development Authority (NJEDA)

675 US Highway One
North Brunswick, NJ 08904
609-690-1654
aidita.milsted@njeda.gov
<https://www.njeda.gov/>

MARKETPLACE VENDORS

New Jersey Historic Preservation Office

501 East State Street
Trenton, NJ 08625
609-940-5169
david.renitsky@dep.nj.gov
<https://dep.nj.gov/hpo/>

New Jersey Historic Trust

101 South Broad Street
Trenton, NJ 08608
609-984-0473
njht@dca.nj.gov
<https://www.nj.gov/dca/njht/>

Ocean County Cultural and Heritage Commission

1198 Bandon Road
Toms River, NJ 08753
848-226-4587
thart@co.ocean.nj.us
<https://co.ocean.nj.us/OC/ch/>

Preservation New Jersey

PO Box 990
West Trenton, NJ 08628
973-813-2032
info@preservationnj.org
<https://preservationnj.org/>

PULLMAN

10150 Old Columbia Rd
Columbia, MD 21046
240-935-1665
eventmgmt@structuralgroup.com
<https://www.pullman-services.com/>

Quaker Commercial Windows and Doors

504 Hwy. 63 South, PO Box 128
Freeburg, MO 65035
800-374-0438
jimmym@quakerwindows.com
<https://www.quakercommercialwindows.com/>

Richard Grubb & Associates, Inc.

259 Prospect Plains Road, Building D
Cranbury, NJ, 08512
609-915-6869
pgeorge@rgaincorporated.com
<https://richardgrubb.com/>

Terracon Consultants

930 Harvest Drive, Suite 430
Blue Bell, PA 19422
651-225-5298
suzanne.reece@terracon.com
<https://www.terracon.com/>





FEATURED SPEAKERS

Erik Hein



Erik Hein is the Executive Director of the National Conference of State Historic Preservation Officers (NCSHPO), the national organization representing the State Historic Preservation Offices in every State, Territory and the District of Columbia before elected federal officials, federal agencies, national non-profits and the public. Before this position, which he has held since 2013, he was the President of Preservation Action, a national grassroots nonprofit organization focused entirely on federal historic preservation policy. Prior to that he held various positions at statewide, local and

municipal historic preservation organizations and offices in Pennsylvania and the District of Columbia. A national leader in historic preservation, he currently also serves on the Boards of several nonprofit organizations including the Preservation Action Foundation, National Preservation Institute, National Preservation Partners Network, Preservation Delaware and the Lewes Historical Society.

In addition to extensive public policy and nonprofit experience, Hein's background is in communications and architectural history. He studied 19th Century art and architecture at the Victoria University of Manchester, UK, and holds a Bachelor's degree from Penn State University and a Master's in American Studies/Historic Preservation from the George Washington University.

Nakita Reed



Nakita Reed is an architect and preservationist driven by the belief that existing buildings hold the key to addressing both the climate crisis and social inequality. She is Senior Director of Preservation Operations for the African American Cultural Heritage Action Fund at the National Trust for Historic Preservation, where she strengthens preservation practice systems, supports strategic partnerships, and advances preservation education. With expertise ranging from National Register properties to Passive House certifications, Nakita helps building owners and developers recognize the potential

of what already exists and navigate the real-world pathways to reuse, from performance goals to implementation. Through her work (including prior practice at Quinn Evans), the Tangible Remnants podcast, and board service with leading preservation organizations, she is committed to making sustainable preservation the standard, not the exception. As

one of the few Black female architects working at this intersection, Nakita's perspective informs every aspect of her work from project strategy to public speaking and mentoring the next generation. She believes historic buildings can be both culturally significant and high-performing, and that transforming existing places is essential to a more resilient future.

Shaw Sprague



Shaw Sprague joined the National Trust for Historic Preservation in 2012 and serves as Vice President of Government Relations, where he is a member of the executive leadership team and directs the organization's federal advocacy strategy before Congress and the Administration. In this role, he leads a high-performing team and cultivates strategic relationships across government, nonprofit, and private-sector partners to advance a shared preservation agenda.

Shaw has a strong track record of building and managing broad-based coalitions that secure funding for historic preservation programs, strengthen state and federal incentives for building reuse, and elevate the role of preservation in addressing national priorities. His work emphasizes collaboration, aligning diverse stakeholders around policies that protect historic places and ensure their relevance for future generations.

Prior to joining the National Trust, Shaw advanced land conservation initiatives at The Trust for Public Land. He also served on Capitol Hill as a senior advisor to Senator Susan Collins, where he managed a wide-ranging policy portfolio including natural resources, trade, and judiciary issues.

Shaw holds a J.D. from Suffolk University Law School in Boston, Massachusetts, with a concentration in environmental, municipal, and land use law.



WORKSHOPS & TOURS

DAY 1 | WEDNESDAY, JUNE 17, 2026

AICP members can earn general Certification Maintenance (CM) credits as well as Sustainability and Resilience (SR) CM credits for many activities at this event. When CM credits are available, they are noted beneath the session title. More information about AICP's CM program can be found at planning.org/cm.

The New Jersey Historic Trust is a registered provider of AIA-approved continuing education under Provider Number 10016715. All registered AIA CES Providers must comply with the AIA Standards for Continuing Education Programs. Any questions or concerns about this provider or this learning program may be sent to AIA CES (cessupport@aia.org or (800) AIA 3837, Option 3).

This learning program is registered with AIA CES for continuing professional education. As such, it does not include content that may be deemed or construed to be an approval or endorsement by the AIA of any material of construction or any method or manner of handling, using, distributing, or dealing in any material or product.

AIA continuing education credit has been reviewed and approved by AIA CES. Learners must complete the entire learning program to receive continuing education credit. AIA continuing education Learning Units earned upon completion of this course will be reported to AIA CES for AIA members. Certificates of Completion for both AIA members and non-AIA members are available upon request.

(T-1) Garden Perspectives: A Tour of Willowwood Arboretum and Bamboo Brook

Location: Willowwood Arboretum

Audience: AIA, CRM, H, HT, M/C

AIA CES approved for 3.5 LU credits | Intermediate Level

Step into the living legacy of American landscape design with a behind-the-scenes tour featuring the historic gardens at Willowwood Arboretum and Bamboo Brook Outdoor Education Center. This guided experience invites garden enthusiasts, landscape professionals, historians, and preservation professionals to look beyond the building and explore two of New Jersey's most significant horticultural treasures. Participants will get a behind-the-scenes look at how new scholarship is changing the narrative and context of Willowwood Arboretum, New Jersey's most comprehensive and longest continually operating Arboretum, and explore the preserved historic gardens of pioneering landscape architect Martha Brookes Hutcheson. As one of the first women to practice landscape architecture professionally in the United States, Hutcheson left an enduring mark on early 20th-century garden design. The tour will include walking on grass and unpaved/uneven surfaces along an approximately two-mile route.

Tour Leaders:

Margaret M. Hickey, AIA, Historic Preservation Specialist, Connolly & Hickey Historical Architects



Kathleen L. John-Alder, Associate Professor & Landscape Architect, Rutgers University
Peter Viteretto, Principal, PLA, FASLA, Heritage Landscapes LLC
Bruce Crawford, Manager of Horticulture, Morris County Park Commission

House where Lafayette was feted upon his triumphant return to the US, Morristown Green, First Presbyterian Church, founded 1733; and “The Hollow,” longtime center of the local African American Community. Participants should expect to walk and stand in both sun and shade. Restroom facilities will be available along the one-mile route. At the conclusion, the shuttle will return to Acorn Hall.

(T-2) Morristown Through Time: Revolution and Evolution

Location: Acorn Hall

Audience: H, HT, NP

AIA CES approved for 3.5 LU credits | Intermediate Level

Famously the site of two encampments by Washington’s troops, Morristown boasts a remarkable history that expands far beyond the Revolution. Join us for a guided exploration of over 250 years walking across one of New Jersey’s most storied towns. The tour will begin at Acorn Hall, Morristown County Historical Society’s headquarters and one of the best-preserved historic house museums in NJ, where a shuttle will be provided to continue. At each stop, experts will share the history preserved within each site. Stops include Macculloch Hall Historical Museum, home to the political cartoons of Thomas Nast; Sansay

Tour Leaders:

Amy Curry, Executive Director, Morris County Historical Society (MCHS)

(W-1) Practical Preservation Techniques for Traditional Finishes: A Hands-On Experience

Sponsored by the Ocean County Cultural & Heritage Commission

Location: METC Education Annex

Audience: AIA, CRM, HPC

AIA CES approved for 3.5 LU credits | Intermediate Level

This is a hands-on, technical workshop that expands upon the use and application of linseed oil paints as presented on during last year’s conference. The workshop will

begin with a brief presentation of linseed oil paints then the participants will break out into working groups to practice preparation and application. The stations include plaster application, window application, the painting process, and removal/stripping. Attendees will leave the workshop with an understanding of how to use and apply linseed oil paints on windows and clapboard. This workshop is a must for any architects, contractors, and individuals interested in learning more about returning to traditional materials.

We ask that all attendees please dress appropriately! This is a hands-on workshop so wear clothing that you are okay with getting a little dirty. Closed toes shoes are required. Smocks, gloves, and other personal protective equipment will be provided.

Speakers:

Michiel Brouns, Founder, Brouns Glass LLC, Brouns & Co, and Brouns & Galloway

Annabelle Radcliffe-Trenner, AIA, RIBA, FAPT, Principal of Historic Building Architects, LLC

Peter Galloway, Preservationist, Project Manager, and Partner, Brouns & Galloway

(W-2) Keys to Collecting: An Introduction to Collections Management

Location: Fosterfields Living Historical Farm Auditorium

Audience: H, M/C, NP

Join the Morris County Park Commission and Morris County Historical Society to explore the fundamentals of collections and archives management. Workshop will include discussions on topics such as establishing a scope of collections,

accessioning and deaccessioning, cataloging and documentation, as well as collections care, organization, and storage. Special attention will be given to working within the limitations of sites' display and storage capabilities as well as organizations' budgetary and workforce restraints. Participants will have the opportunity to visit the many buildings that comprise Fosterfields Living Historical Farm to see how a variety of structures are utilized to achieve collections management goals. The session is designed to guide participants through the practical first steps towards effective stewardship of historic collections and archives.

Speakers:

Anne Motto, F.M. Kirby Curator of Collections, Morris County Historical Society (MCHS)

Kathleen Humphreys, Registrar, Morris County Park Commission

Informal Networking Reception

Sponsored by the Morris Museum & Preservation New Jersey

Location: Morris Museum

After a day of workshops, tours, and travel, join fellow conference attendees for a relaxing and fun evening at the Morris Museum in Morris Township. Enjoy each other, live music, Twin Oaks (McKim, Mead & White, 1913), and a stunning array of exhibitions including Matisse: Beyond Color, a new installation of sculptures by Thaddeus Mosley (1926-2026), and this summer's New Jersey Arts Annual—Common Ground, NJ Artists Think Monumental—installed around the campus.



SESSIONS & TOURS

DAY 2 | THURSDAY, JUNE 18, 2026

AICP members can earn general Certification Maintenance (CM) credits as well as Sustainability and Resilience (SR) CM credits for many activities at this event. When CM credits are available, they are noted beneath the session title. More information about AICP's CM program can be found at planning.org/cm.

The New Jersey Historic Trust is a registered provider of AIA-approved continuing education under Provider Number 10016715. All registered AIA CES Providers must comply with the AIA Standards for Continuing Education Programs. Any questions or concerns about this provider or this learning program may be sent to AIA CES (cessupport@aia.org or (800) AIA 3837, Option 3).

This learning program is registered with AIA CES for continuing professional education. As such, it does not include content that may be deemed or construed to be an approval or endorsement by the AIA of any material of construction or any method or manner of handling, using, distributing, or dealing in any material or product.

AIA continuing education credit has been reviewed and approved by AIA CES. Learners must complete the entire learning program to receive continuing education credit. AIA continuing education Learning Units earned upon completion of this course will be reported to AIA CES for AIA members. Certificates of Completion for both AIA members and non-AIA members are available upon request.



Keynote Address | The Dynamic Federal Landscape: Challenges and Opportunities in History and Historic Preservation

Location: Dolan Performance Hall

Audience: AIA, AICP, AR, CRM, H, HPC, HT, M/C, NP

AIA CES approved for 1.25 LU credits | Intermediate Level

The last few years have brought new and what seems like ever-changing challenges for those working in the fields of history, historic site management, cultural resource management, and historic preservation. These challenges include a changing regulatory landscape, changes to federal funding, federal grants, how sites are interpreted, and whose history is interpreted and preserved. Join the conversation with our panel of experts from national partner organizations to hear the latest information about what is happening in history and historic preservation policy at the federal level and how these fields are being impacted. Explore ways to respond to the current reality including effective ways to

make your concerns known, success stories and lessons learned, and how we should be preparing for the future.

Moderator:

Katherine J. Marcopul, Ph.D., CPM,
Administrator and Deputy State Historic Preservation Officer (NJ)

Speakers:

Erik Hein, MA, *Executive Director, National Conference of State Historic Preservation Officers*

Nakita Reed, AIA, CPHC, LEED, BD+C,
NOMA, National Trust African American Cultural Heritage Action Fund

Shaw Sprague, *Vice President of Government Relations, National Trust for Historic Preservation*

(T-3) Sisters of Charity Administration Building and Holy Family Chapel Tour

Location: *Annunciation Center*

Audience: *AIA, H*

The Sisters of Charity of Saint Elizabeth welcomes conference attendees on a rare tour of their historic Holy Family Chapel and Administration Building. Space is limited! Transportation will be provided to and from the Annunciation Center for this tour.

Tour Leaders:

Sister Noreen Neary, *Director of Archives for the Sisters of Charity of Saint Elizabeth*

Margaret Kirby, *Sisters of Charity of Saint Elizabeth*

(S-1) High Water, High Stakes: Adapting Historic Homes for Flood Resilience

Sponsored by the New Jersey Historic Trust

Location: *Dolan Performance Hall*

Audience: *AIA, AICP, CRM, HPC, M/C*

AIA CES approved for 1.25 LU credits |
Intermediate Level

AICP Credits: **CM | 1.25**

SR | 1

Flooding is an increasingly urgent threat to New Jersey’s historic housing stock. As flood events intensify due to climate change, preservation professionals, local officials, and homeowners are increasingly faced with complex challenges adapting historic properties while retaining historic character and fulfilling regulatory compliance. This session will provide a practical overview of appropriate adaptation to flood conditions. Presenters will examine flood risk assessment, regulatory frameworks,



and design strategies that balance safety, resilience, and preservation values. The session will address federal, state, and local regulations, including FEMA floodplain requirements, Section 106 Review, New Jersey Register of Historic Places review, and the application of the Secretary of the Interior's Standards for Rehabilitation. Participants will learn about how common flood adaptation strategies can be implemented in ways that honor design guidelines and minimize impacts to character-defining features. Through real-world examples, the session will highlight successful approaches and common challenges, reconciling floodplain requirements with preservation standards and guidelines. AICP members can earn the following credits:

CM | 1.25
SR | 1

Speakers:

Scott Gerlica, Program Specialist 2, New Jersey Historic Preservation Office

Dominique M. Hawkins, FAIA, NCARB, LEED AP, Founder, Preservation Design Partnership, Board Member, National Center for Preservation Technology and Training

Chris Testa, Civilian Manager, Hazard Mitigation Unit, Recovery Bureau of the New Jersey State Police

independence, bringing with it an infusion of capital that bolstered our field. By the 250th anniversary in 2026, historic preservation made immense strides while facing significant setbacks. Many of our sites use infrastructure, institutional documents, and interpretation from the Bicentennial era while stewards work creatively to modify them for new audiences and site needs. This session is part-panel and part-roundtable discussion featuring speakers from New Jersey State Parks, Forests & Historic Sites, Hargrove International, Inc., and Palisades Interstate Park to observe how site management, visitors and interpretation have evolved since the 1970s, making recommendations to adapt existing preservation methods for the 2020s.

Speakers:

Olivia VF Chaudhury, Historic Preservation Specialist 1, New Jersey Historic Trust

Francesca Costa, Public Historian, Palisades Interstate Park

Eric Nelsen, Public Historian, Palisades Interstate Park

Cheryl Hargrove, Founder, Hargrove International, Inc.

Elizabeth Dowd, Resource Interpretive Specialist, New Jersey State Park Service

Rebecca Fitzgerald, Administrator, New Jersey Department of Environmental Protection's State Park Service

(S-2) The Bicentennial and Beyond: Reshaping Preservation for 2026

Sponsored by Journey Through Jersey

Location: Room 213

Audience: H, HT, M/C, NP

Come explore the evolution of historic preservation from the 1970s to today! The National Historic Preservation Act was active for 10 years when the Bicentennial of 1976 marked 200 years of American



(S-3) Is Your Museum Building Part of Your Collection?

Sponsored by Quaker Commercial Windows and Doors

Location: Room 129

Audience: AIA, CRM, M/C, NP

AIA CES approved for 1.25 LU credits | Intermediate Level

Listed on the National Register of Historic Places, the James Library Building has housed the Museum of Early Trades & Crafts since 1969. The Richardsonian Romanesque Revival building is a jewel box with polychromatic exterior stonework, stained glass windows, decorative fireplaces, and interior glazed brick with rare painted stencils. The building is integral to the Museum's mission of

inspiring connection with New Jersey's history, culture, trades, and crafts. The presenters will describe the five phases of restoration that have been completed, "lessons learned," and methods for sourcing grants and public funding. This case study will provide a road map of planning steps necessary to preserve a building using the latest preservation technology such as thermography, drone photography, and material conservation testing to identify causes of problems such as moisture ingress, and best material preservation solutions. Presenters will discuss the challenges of managing construction while remaining open to the public; the effective use of technology to reduce construction costs; professional and construction team qualifications; and integrating exhibits into distinctive settings.

THE HISTORICAL WINDOW EXPERTS



- Accurate Sightlines with Distinct Profiles
- Structurally Superb with up to AW ratings
- Long, Successful History with The National Park Service
- Knowledgeable on State/Federal Guidelines
- Expertise that Matters!

The Right Solution for Your Next
Historical Replication Project

**Quaker Commercial Windows
Eldon & Freeburg, MO**

QuakerCommercialWindows.com



The Bell | Trenton
Quaker H650 Series
credit: AJAX Management Group | ajaxmgt.co



Speakers:

Deb Starker, Executive Director, Museum of Early Trades & Crafts

Annabelle Radcliffe-Trenner, AIA, RIBA, FAPT, Principal of Historic Building Architects, LLC

Christina Burris, Architectural Conservator, Historic Building Architects, LLC

(S-4) Living History in Practice: Special Considerations for Historical Reenactments

Sponsored by HMR Architects

Location: Room 109

Audience: H, HT, M/C, NP

Historical reenactments are powerful tools for public engagement, but they require

careful planning to ensure safety, accuracy, and meaningful interpretation. This panel session will explore the behind-the-scenes considerations that make successful reenactments possible at historic sites. Representatives from the Old Barracks Museum, Middlesex County, Washington Crossing State Park, Howell Living History Farm, and the Princeton Battlefield Society will discuss best practices and shared challenges related to educating and training staff and volunteers, making historically accurate costumes, handling and serving food in historic kitchens, and the safe and responsible handling of historic weaponry. Panelists will highlight how their institutions balance authenticity with modern safety standards, regulatory requirements, and visitor expectations. This session will offer practical insights for



HMRARCHITECTS
609-452-1070 - HMR-ARCHITECTS.COM

Historic Racing Stable, Thompson Park, Lincroft, NJ



museum professionals, site managers, and educators who plan or support living history programs, providing attendees with transferable strategies to strengthen reenactment programs across a wide range of historic settings.

Speakers:

Mark A. Turdo, Assistant Director of Interpretation & Curation, Old Barracks Museum, Trenton, NJ

Mark Nonestied, Division Head, Middlesex County Division of History and Historic Preservation

Larry Kidder, Farm Historian & Interpreter, Howell Living History Farm

Ronald P. Rinaldi, Historian, Educator, Reenactor and Trustee of the Washington Crossing Park Association of NJ

Bill Marsch, Development Specialist, Princeton Battlefield Society

(S-5) Developing & Applying Historic Design Guidelines in New Jersey

Sponsored by CTS Group Architecture/ Planning PA

Location: Dolan Performance Hall

Audience: AIA, AICP, CRM, HPC, M/C

AIA CES approved for 1.25 LU credits | Intermediate Level

AICP Credits: CM | 1.25

How do design guidelines help achieve successful preservation outcomes in New Jersey? This panel compares two different examples at opposite ends of the Jersey shore. Cape May is a National Historic Landmark with a longstanding HPC, strict regulatory standards, and a unique concentration of Victorian-era wood-frame architecture. Cape May updated their Historic Design Standards in 2022 as part of an NJHPO-funded project. Red Bank is a growing community with a

recently re-established HPC, more flexible guidelines, and an advisory review process for a primarily masonry commercial district and small-scale residential district. Red Bank created Historic Design Guidelines in 2025 as part of an NJHT-funded project. Following a brief overview by the consultant responsible for Cape May and Red Bank's design guidelines, panelists will discuss the process of crafting guidelines, how guidelines help protect historic character, and how to balance preservation with new needs such as sustainability, accessibility, and new development. The session will give participants practical tools and ideas to adapt guidelines to fit their own community's history, rules, and resources. AICP members can earn the following credits **CM | 1.25**.

Speakers:

Steven Smolyn, Principal, Architectural Heritage Consultants, LLC

John Boecker, RA, Architect & Chair of the City of Cape May Historic Preservation Commission

Marjorie Cavalier, Member, Red Bank Historic Preservation Commission

rules and application. Information will focus on behind-the-scenes assessment of the Program's effectiveness, including how data collected and feedback received was utilized in legislative and regulatory improvements made to the Program. Additionally, the session will include updates on some of the Program's approved projects, and how completion of these first approved projects will affect the Program and economic development at the local and state levels. The HPRP is a historic tax credit (HTC) program which can be used to leverage the Federal HTC. Most projects approved under the Program can receive tax credit awards of 50-60% of eligible costs up to a maximum of \$12 million, depending on project type and location. AICP members can earn the following credits **CM | 1.25**.

Speakers:

C. Aidita Milsted, Director of Historic Preservation & Real Estate Incentives, New Jersey Economic Development Authority
Michael Wierzbicki, Senior Project Officer, Historic Preservation & Real Estate Incentives, New Jersey Economic Development Authority

(S-6) Historic Property Reinvestment Program: Assessing its Impact and Evolution

Sponsored by the New Jersey Economic Development Authority

Location: Room 109

Audience: AIA, AICP, CRM, M/C, NP

AIA CES approved for 1.25 LU credits | Intermediate Level

AICP Credits: **CM | 1.25**

The Historic Property Reinvestment Program (HPRP) has evolved since it first started taking applications in 2022. This session will give attendees a general overview of what the Program is today, including recent changes to the Program's



(S-7) The Revolutionary She: Preserving Women's History at Historic Sites

Sponsored by the Friends of New Jersey Heritage

Location: Room 209

Audience: CRM, H, M/C, NP

Women have always been central to the making of New Jersey's history, yet their lives, labor, and leadership remain underrepresented at many historic sites. The Revolutionary She brings together curators and site directors to explore practical, research-driven strategies for centering women's experiences in interpretation, collections, and public programming. This session focuses on integrating women as essential historical actors whose work shaped political movements, economies, households, and communities. Drawing on archival research, material culture, archaeology, and site-based storytelling, panelists will use case studies from New Jersey historic sites to demonstrate successful approaches to incorporating women's histories. Challenges include limited documentation, entrenched interpretive narratives, and assumptions about audience interest. Panelists will discuss strategies for navigating obstacles, including creative research methodologies, cross-institutional collaboration, and interpretive reframing to make women's

histories legible and compelling to the public. Designed for professionals working directly with historic properties, The Revolutionary She offers concrete tools and collaborative models that encourage participants to move beyond temporary programming toward long-term interpretive change.

Speakers:

Denise Rompilla, PhD, Project Historian and Independent Historical Consultant

Angelica Diggs, Executive Director, Montclair History Center/Black Heritage Site Montclair YWCA

Rachael Glashan Rupisan, Executive Director, Alice Paul Center for Gender Justice

Melanie Bump, Curator of Collections and Exhibits, Morris County Park Commission

(S-8) America 250th & Heritage Tourism: Storytelling, Preservation & Community Growth

Sponsored by Journey Through Jersey

Location: Room 129

Audience: HT, M/C, NP

In honor of the 250th anniversary of the founding of the United States, this dynamic panel led by PBS host and producer Darley Newman explores how New Jersey destinations can leverage heritage tourism to support preservation, economic impact, and public engagement—during America 250 and beyond. Drawing from her PBS series *Travels with Darley: Revolutionary Road Trip*, Newman and her panelists share how inspired storytelling, media partnerships, and cross-state collaboration can elevate historic places and deepen public connection.

Speakers:

Darley Newman, Executive Producer, Author & TV Host, *Travels with Darley*

Mark Nonestied, Division Head, Middlesex County Division of History and Historic Preservation

DELIVERING CULTURAL RESOURCE SOLUTIONS TO ACHIEVE OUTSTANDING RESULTS FOR YOUR COMMUNITY



www.dewberry.com

Zachary Davis, RPA
zdavis@dewberry.com
973.576.1611

Anthony Fulco, PE, 24GE03993900
Dewberry Engineers Inc.,
24GA28047600

Rev. Dr. Wanda Lundy, Director of Operations for the Greater Elizabeth Chamber of Commerce and the Elizabeth Destination Marketing Organization
Will Krakower, Resource Interpretive Specialist II for Historic Resources, Princeton Battlefield State Park & Thomas Clarke House State Historic Site, State Parks, Forests & Historic Sites, New Jersey Department of Environmental Protection



(S-9) The Morris Canal & Morris Canal Greenway in the 21st Century

Sponsored by the Friends of New Jersey Heritage

Location: Room 129

Audience: AIA, AICP, AR, H, M/C, NP

AIA CES approved for 1.25 LU credits | Intermediate Level

AICP Credits: CM | 1.25

Long before railroads, the completion of the Morris Canal gave New Jersey its first interstate transportation system. Iron-making settlements in the New Jersey Highlands grew into industrial towns, and Pennsylvania anthracite coal deliveries turned coastal towns into major industrial cities. Today, the Canal Society of New Jersey (CSNJ) is working with communities, organizations, and agencies such as the North Jersey Transportation Planning Authority to create a Morris Canal Greenway that preserves remaining

features while establishing a statewide history and recreation corridor. Over the past decade, this effort has grown from a grassroots initiative into a statewide project reflected in planning documents across multiple counties and municipalities. Presenters will examine using technology to broaden access, engage new audiences, and support preservation. Topics include the development of a satellite greenway visitor center model; archival digitization projects that make CSNJ collections accessible online; virtual programming to extend educational reach; expanded social media initiatives; and emerging interpretive tools such as archival film and AI-assisted animation. AICP members can earn the following credits **CM | 1.25**.

Speakers:

Margaret M. Hickey, AIA, Principal Historic Preservation Specialist, Connolly & Hickey Historical Architects

Joe Macasek, President, Canal Society of New Jersey

Ted Ritter, External Affairs Manager, North Jersey Transportation Planning Authority

(S-10) Revolutionary New Jersey Revealed

Sponsored by the New Jersey Historic Trust

Location: Room 109

Audience: AR, CRM, H

This panel discussion highlights how archaeological investigations are expanding our knowledge of the Revolutionary era, using examples from battlefields, encampments, and maritime sites. The panel's objective is to spotlight the potential of archaeology to expand our understanding of a formative period in our nation's history. It is intended for preservation professionals, historians, archaeologists, historic site managers, and the general public.

Moderators:

Richard Veit, *Provost and Senior VP for Academic Affairs, Monmouth University*

Speakers:

Wade Catts, *President, South River Heritage Consulting, and Adjunct Professor, Rowan University*

Steve Nagiewicz, *Adjunct Professor, Marine Science, Stockton University*

Jen Janofsky, *Professor of Public History, Rowan University, and Director, Red Bank Battlefield Park*

the public gains a deeper appreciation of the rich history that has shaped the state, preserving these narratives for future generations.

Speakers:

Dr. Synatra Smith, *Project Manager, Black Heritage Trail, New Jersey Historical Commission*

Dolly L. Marshall, *Historic Preservation Specialist for the City of Camden, and Historian and Trustee, Mount Peace Cemetery Association*

(S-11) Honoring New Jersey Black History through Historical Markers

Sponsored by the Friends of New Jersey Heritage

Location: Room 218

Audience: CRM, H, HT, M/C, NPs

Legislation signed by Governor Murphy on September 7, 2022 called for the New Jersey Historical Commission to establish an official Black Heritage Trail “to promote awareness and appreciation of Black history, heritage, and culture,” that will “highlight Black heritage sites through historical markers and a trail-like path that connects the stories of Black life and resiliency.” To date, there have been 77 approved New Jersey Black Heritage Trail nominations. This presentation will cover how to nominate a site for the New Jersey Black Heritage Trail, what happens after a site is approved, and brief review of approved and installed markers. By unearthing and highlighting these previously unseen aspects of history, the trail plays a crucial role in illuminating narratives that have long been overlooked. It fosters a more inclusive understanding of New Jersey’s diverse heritage, ensuring these important stories are accessible and celebrated. Through this initiative,

(S-12) Complying with Law P.L. 2025, c. 149: Educating Historic Preservation Commission Members and the People You Serve

Sponsored by the Friends of New Jersey Heritage

Location: Dolan Performance Hall

Audience: AICP, HPC, M/C

AICP Credits: **CM | 1.25**

In October 2025, Governor Phil Murphy signed legislation that requires members of Historic Preservation Commissions (HPCs) to complete trainings to serve on the commissions. The new legislation highlights the importance of continuing education and training not only for commission members, but also for the people they serve. This panel session has three goals: educate current and future HPC members on the new training requirements and what they should expect; discuss the different ways HPCs can educate those they serve, including funding opportunities for those materials; and provide first-hand experience from a current HPC chair on the ways he educated himself, others on his commission, and those his commission serves in order to encourage more informed applications. AICP members can earn the following credits **CM | 1.25**



Speakers:

Andrea Tingey, Program Specialist 3, New Jersey State Historic Preservation Office

Glenn Ceponis, Executive Director, New Jersey Historic Trust

Frank F. Caruso, Chair, Burlington City Historic Preservation Commission

Anthony Angiolini, Chairman, Montville Township Historic Preservation Commission (HPC)

(S-13) Lord Stirling Unearthed: Public Archaeology at a Lost Country Estate

Sponsored by Sponsored by Easton Architects

Location: Room 218

Audience: AR, M/C, CRM

This panel will use the lens of archaeology to explore the past, present, and future

of the former estate of Revolutionary War General William Alexander, also known as Lord Stirling. Owned by Somerset County and operated by the Somerset County Park Commission, this historic property is envisaged as a future major regional heritage tourism destination with a focus on late colonial and Revolutionary War-era archaeology and material culture. The panel will consider the site's history and architecture, excavations, and the role of county partners in promoting public engagement and academic opportunity through field schools and archaeological collections management. The County aims to use the Lord Stirling Manor Archaeological Site to highlight the life of a key figure of the American Revolution alongside the untold stories of the women, tradespeople and enslaved persons that supported his opulent estate. The dynamic conversation will be moderated by Somerset County Deputy

Director Melonie Marano, a champion of cultural and historic preservation in local government.

Speakers:

Josephine T. Taranto, Preservation Planner, Somerset County

Richard Veit, Provost and Senior VP for Academic Affairs, Monmouth University

Richard W. Hunter, President, Hunter Research, Inc.

Commissioner Melonie Marano, Somerset County Commissioner



SPEAKERS

Anthony Angiolini

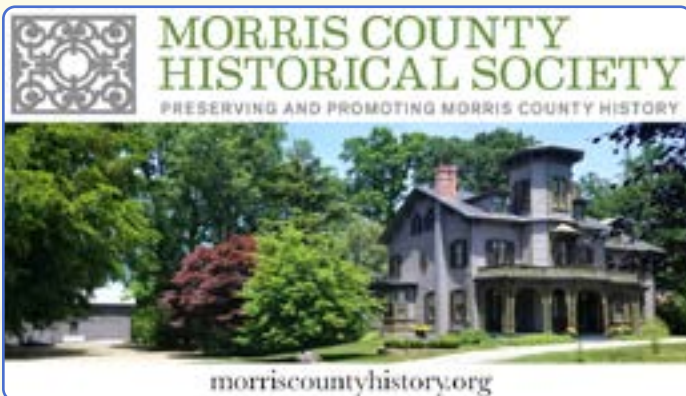


Anthony Angiolini currently serves as the Chairman of the Montville Township Historic Preservation Commission (HPC), President of the Montville Township Historical Society, Trustee of the Boonton Historical Society and an appointed Member of the Morris County Historic Preservation Trust Fund Review Board. He is an avid traveler and museum explorer. Professionally, he is retired. Prior to retiring, he began his career in accounting, CPA, audit, tax and financial forensic investigations before moving over to information technology and eventually settling in project management, PMP, for the past 30 years. In addition, he is a former elected official and has spent over 30 years on multiple Boards, Commissions and Committees in Montville, Lincoln Park and Morris County.

John Boecker



John Boecker is a registered architect and longtime member of the City of Cape May Historic Preservation Commission. He was closely involved in the development and implementation of Cape May's Historic Design Standards and brings extensive experience in applying preservation principles within active coastal communities.



Shannon Bremer



Shannon Bremer is a Historic Preservation Specialist for the New Jersey Historic Trust. She has overseen numerous grant-funded, preservation projects ranging from preservation plans and construction documents to ADA accessibility and capital improvement projects since she began working for the Trust in 2022. Ms. Bremer also provides technical assistance to grantees and the public at large as well as oversees the Trust's Emergency Intervention Fund. Outside of her work with the Trust, Ms. Bremer is an instructor for the Mid-Atlantic Regional Center for the Humanities (MARCH) at

Rutgers-Camden. Ms. Bremer holds a Bachelor of Arts degree in Historic Preservation from the University of Mary Washington (Fredericksburg, VA) and a Master of Arts in American Studies from the College of William & Mary (Williamsburg, VA). She also holds a certificate in Material Culture and Public History from the National Institute of American History and Democracy at the College of William & Mary.

Michiel Brouns



Michiel Brouns is a heritage-building specialist, entrepreneur, and author whose work bridges traditional craftsmanship and modern performance standards. Trained as a historic building surveyor in the Netherlands, Michiel moved to the UK in 2006 and has become a leading figure in the practical application and commercial revival of historically accurate, sustainable building materials. The original founder of Histoglass Ltd, he has started a new bespoke glass company in the USA under the name Brouns Glass LLC. Michiel then founded Brouns & Co, a supplier of traditional linseed-

oil-based paints, primers, and finishes. Michiel's combined expertise in heritage glazing, paint systems, and building physics allows him to advise on whole-building conservation strategies rather than isolated interventions. He is the author of *Linseed Paint & Oil – A Practical Guide to Traditional Production and Application* (2023), and a frequent lecturer and CPD provider for architects, conservators, and surveyors in the UK, Europe, and the United States.

Melanie Bump



Melanie Bump, Curator of Collections and Exhibits for the Morris County Park Commission (MCPC), oversees the interpretation of the MCPC's over 50,000 artifacts and curates exhibits for historic sites, including New Jersey Heritage Trail sites, Bamboo Brook Outdoor Education Center, and Fosterfields Living Historical Farm. Through exhibits, she presents the significant history of New Jersey women, including Caroline Foster, Martha Brooks Hutcheson, and many others. Mrs. Bump has worked in the field for over 20 years, on many projects, including the IMLS-funded Multisensory Toolkit and the NEH-funded Sustainable Collections Environments, and judged for the Essex County Teen Arts Festival. She is a

member of the New Jersey Association of Museums' Collections Committee and was on the Telling Untold Histories Unconference Planning Committee. Melanie received her M.A. in Museum Professions from Seton Hall University and a Fine Arts degree from William Paterson University and California State San Bernardino (NSE).

Christina Burris



Christina Burris has run the Architectural Conservation Laboratory at Historic Building Architects for more than 13 years. She also works as a project manager, performs conditions assessments, material investigations, oversees material testing and assists in taking projects from Preservation Plan through multiple construction phases. She has a Bachelor's in Archaeology and Anthropology from Oberlin College and a Master of Science in Historic Preservation from the University of Pennsylvania.

METC MUSEUM OF EARLY TRADES & CRAFTS

SHARE THE PAST, IMAGINE THE FUTURE

9 Main Street, Madison, NJ
metc.org

SAVE THE POWERHOUSE IN JERSEY CITY!

join the movement

Frank Caruso



professional life, Mr. Caruso serves as the Executive Director for the Government Records Council, an affiliate of the N.J. Department of Community Affairs.

Frank Caruso has served on the Burlington City Historic Preservation Commission since 2016 as and has held the position of Chair since 2023. Mr. Caruso is a local product of Burlington City and graduated from Rutgers Camden in 2004 with a bachelor's degree in history and a minor in museum studies. His time at Rutgers included an internship at the Camden County Historical Society under the direction of John Seitter and Judy Snyder. Mr. Caruso is also a current member of the Annual Preservation Conference Planning Committee. In his

Wade P. Catts



Princeton, Red Bank, Short Hills, and Stone Arabia/Klock's Field. He is the recipient of the Archibald Crozier Award for Distinguished Achievement in and Contributions to Archaeology from the Archeological Society of Delaware (2016) and the History Award Medal from the National Society, Daughters of the American Revolution (2021).

Wade P. Catts is president of South River Heritage Consulting in Newark, Delaware and an adjunct professor at Rowan University. He is a Registered Professional Archaeologist (RPA) specializing in history, archaeology, and historic preservation. He earned a graduate degree in American History from the University of Delaware and has more than four decades of historical archaeological experience and has worked at Revolutionary War camps, forts, and battlefields throughout the Middle Atlantic region, including Brandywine, Bennington, Cooch's Bridge, The Battle of the Hook, Hubbardton,

Marjorie Cavalier



Marjorie Cavalier is a resident of Red Bank and member of the Historic Preservation Commission. She led the subcommittee which developed the recently adopted Red Bank Historic Design Guidelines.

Glenn Ceponis

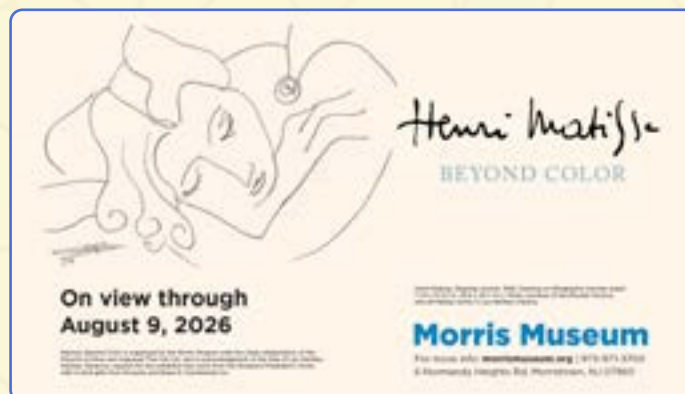


Glenn Ceponis is the Executive Director of the New Jersey Historic Trust overseeing the Trust's mission of advancing historic preservation throughout New Jersey through its education, tourism, stewardship and financial investment programs. Prior to being named Executive Director by the Trust Board of Trustees, he served the Historic Trust for nearly twenty years as a Principal Historic Preservation Specialist. In his previous position Mr. Ceponis worked directly with grantees providing oversight to grant-funded capital and planning projects as well as coordinating its historic preservation easement program. Prior to his work at the Historic Trust, Mr. Ceponis spent fifteen years in the private sector in the field of cultural resource management, three years of which he served a multi-disciplined architectural firm as Director of its Cultural Resource Group providing supervision and project management to a staff of historians, historical architects, archaeologists, architectural historians, and cultural resource specialists. Mr. Ceponis also served ten years on his local Historic Preservation Commission.

Olivia VF Chaudhury



Olivia VF Chaudhury is a Historic Preservation Specialist 1 at the New Jersey Historic Trust. She holds an M.A. Historic Preservation Planning from Cornell University and is an independent scholar of American commemorations focusing on the Bicentennial and 250th. Olivia is a Co-Adjunct Instructor in Historic Preservation teaching Topics in Public History at the Rutgers Mid-Atlantic Regional Center for the Humanities (MARCH). She was the Reisinger Scholar at the New York Preservation Archive Project (NYPAP) in 2024 and a Principal Researcher at the John W. Jones Museum in Elmira, NY from 2018-2022.



Francesca Costa



Francesca Costa is a Public Historian at the Palisades Interstate Park in New Jersey where she oversees the Interpretive Ranger Program, and the park website. Other duties include assisting with park programming, giving illustrated talks, and leading history hikes. Francesca has digitized countless park documents that are now available to the public. She graduated with a minor in Public History from Gettysburg College, and got her Master of Science in the Classics, History & Archeology from the University of Edinburgh. In her spare time, she volunteers at her local Nature Center, and the Closter

Historical Preservation Commission. She is an organizer of the Bergen County Silent Book Club, where the unofficial motto is "literacy and justice for all." Francesca enjoys drinking jasmine tea and reading about indigenous peoples, labor movements, and other aspects of civilian history.

Bruce Crawford



Bruce Crawford is a graduate of Bucknell and Rutgers University School of Landscape Architecture, who founded his own landscape design firm, Garden Architecture Inc., in 1983. While still managing his residential landscape business, Bruce also assumed the position of adjunct professor of Landscape Architecture at Rutgers in 1987. A gifted lecturer and horticulturist, Bruce spent 15 years as director of the Rutgers Gardens beginning in 2005. He is a recent recipient of the Rutgers Gardens Centennial Award of Distinction, the New Jersey Nursery & Landscape Distinguished Service Award, the

Medal of the Garden Club of New Jersey, the GCA Zone IV Horticulture Award and the Horticulture Commendation from Rumson Garden Club. He was the Program Leader in Home and Public Horticulture for the NJ Agricultural Experiment Station from 2020-2021 and is currently the Manager of Horticulture for the Morris County Parks Commission, overseeing Frelinghuysen Arboretum, Willowood Arboretum, Bamboo Brook and the Kay Center.

Amy Curry



Amy Curry is the executive director of Morris County Historical Society (MCHS), a non-profit organization that owns and operates Acorn Hall. Since 2012, she has grown MCHS into a leading state history organization, securing over \$4 million in grant funds for the preservation and restoration of Acorn Hall, its associated carriage house, historic landscape, and to support the county's small history organization initiatives including the first county-wide survey of African American History & Historic Sites, and NJ's first Architectural Study Collection. Ms. Curry has overseen the exponential growth and diversification of MCHS's membership, collections, and archives.

A Massachusetts native, Ms. Curry came to MCHS following a supervisory tenure with the National Park Service and holds an MA in History, BS in Cultural & Natural Resource Management, BS in Forest Science, and AS in Urban Forestry. Her research related to post-emancipation soil erosion on the South Carolina Piedmont was published by Duke University in 2014.

ENDURING ARCHITECTURE | LIVABLE PLACES |
SUSTAINABLE ENVIRONMENTS



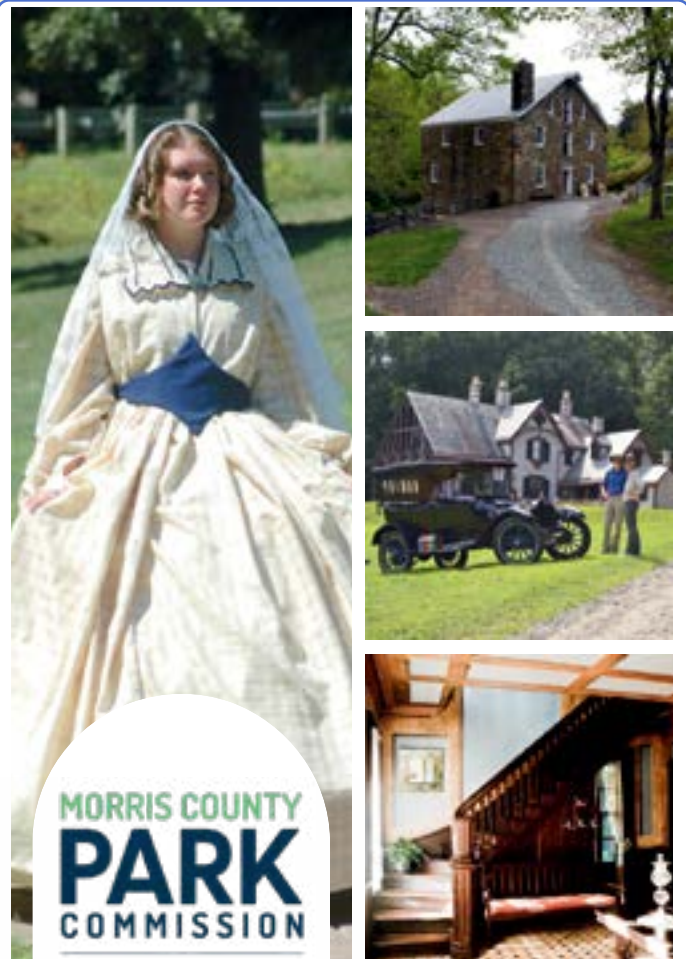
Clarke Caton Hintz

Architecture
Planning
Landscape Architecture

Follow us!



clarkecatonhintz.com
609.883.8383



MORRIS COUNTY
PARK
COMMISSION

From Revolution to Today - Telling Our Local Story



Respecting the Past While Advancing the Future

Blue Bell, PA | Somerset, NJ | Moorestown, NJ



[Terracon.com](https://www.terracon.com)

NJ Historic Preservation Office

dep.nj.gov/hpo

Angelica Diggs



Angelica Diggs is an experienced nonprofit professional specializing in history museums and archives. She began as Executive Director of the Montclair History Center in August 2022, and previously worked for the organization from 2012-2019 in a variety of roles including Assistant Director. Angelica was previously employed as the Assistant Director of Operations at the Museum of Early Trades & Crafts, Project Manager for Montclair Community Farms, and the Archival Associate at Felician University. She holds an M.A. in Museum Management and a B.A. in English from Montclair State University. Angelica has a background in strategic

planning, development and fundraising, project management, program planning, archival management and digitization practices, and community engagement. Angelica has contributed to professional publications, presented at history and preservation professional conferences, serves on the Essex County Arts & Cultural Advisory Board, and is a facilitator for the New Jersey Council for the Humanities' Oral History Community of Practice.

Elizabeth Dowd



Elizabeth Dowd began her career in the 1990s in the North Carolina State Historic Preservation Office as an Environmental Review Specialist and as a Preservation Planner in Greenville, NC. Upon returning to her native New Jersey, she was a Historic Preservation Specialist at the Delaware & Raritan Canal State Park. For the past twenty-plus years, Elizabeth has been a Resource Interpretive Specialist for the New Jersey State Park Service where she works on planning events, creating exhibits, collections management, and supporting friends organizations. She holds a MA in History with a Concentration in Historic Preservation from Wake Forest

University and a Certificate in Non-Profit Management from Duke University. In her spare time, Elizabeth is the proud mom of a special-needs son, a poet, and animal lover.

Rebecca Fitzgerald



Rebecca Fitzgerald serves as the Administrator of the New Jersey Department of Environmental Protection's State Park Service, overseeing the management and operations of 39 state parks, 11 state forests, and five recreation areas spanning more than 450,000 acres. She began her career with the State Park Service in 1993 as a seasonal employee at High Point State Park and transitioned to a permanent role in 1999, spending more than 23 years as a Superintendent managing parks in northern New Jersey. Appointed Administrator in 2022, Rebecca draws on decades of field experience to support the stewardship of New Jersey's natural and

cultural resources while ensuring staff have the tools and training needed to serve the public. An avid outdoor enthusiast, she enjoys hiking, trail running, cycling, kayaking, snowshoeing, and cross-country skiing in the landscapes she helps protect.



Peter Galloway



Peter Galloway is a Clemson University graduate and Georgia-based preservationist with more than a decade of experience leading the restoration of numerous significant projects within the historic districts of Savannah. His work is defined by careful research, craftsmanship, and adherence to period-appropriate methods. Galloway notably supervised both the dismantling of a c. 1693 house from Connecticut, and its meticulous reassembly near Savannah's Forsyth Park. Galloway directed every phase, overseeing complex masonry, plasterwork, carpentry, and timber framing. Collaborating with Michiel Brouns, he expanded his preservation work throughout the Northeast and Mid-Atlantic. Projects include work on General George Washington's Wallace House headquarters in New Jersey; the c. 1791 Squire Benjamin Bosworth House in Connecticut; the c. 1822 St. George's Greek Orthodox Church in Philadelphia; and the hands-on restoration of a Greek Revival cottage in Connecticut, where traditional linseed oil paint and period-appropriate methods were carefully reintroduced. Recently, Peter and Michiel have been restoring exquisite front door surround punch-and-gouge woodwork at the George Read II House in Delaware.

Scott Gerlica



Scott Gerlica is a Program Specialist at the New Jersey Historic Preservation Office, where he reviews projects for compliance with state and federal historic preservation regulations. His work focuses on evaluating potential effects to historic architecture and cultural resources and coordinating with government agencies and consulting parties to support responsible project planning and regulatory review. He holds a B.A. in History from Boston College and an M.S. in Historic Preservation, with a concentration in Preservation Planning, from the University of Pennsylvania. Prior to joining the Historic Preservation Office, he served on active duty in the U.S. Coast Guard.

JBC
 ■■■ JABLONSKI BUILDING CONSERVATION, INC.
 ARCHITECTURAL CONSERVATORS

IF YOU THINK YOU CAN FINISH A MAJOR RESTORATION PROJECT WITHOUT A CONSERVATOR.
 ■■■
 HAVE WE GOT A BRIDGE TO SELL YOU!

JBCONSERVATION.COM | 212.532.7775

RGA
RICHARD GRUBB AND ASSOCIATES, INC.
 HISTORICAL AND ARCHAEOLOGICAL CONSULTANTS

SERVICES

- Historic Architectural Surveys & Evaluations
- Historic Architecture Mitigation
- Historic Tax Credit Services
- Archaeological Surveys & Monitoring
- Cemetery Conservation

WANT TO LEARN MORE?
 609-655-0692
 RGAINCORPORATED.COM
 CULTURAL_RESOURCES@RGAINCORPORATED.COM

Serving the preservation community since 1988!

Cheryl Hargrove



Cheryl Hargrove Author, Instructor, and 40-year travel industry veteran, Hargrove is best known as the National Trust for Historic Preservation’s first Director of Heritage Tourism. During her tenure, Hargrove developed the key steps and principles for sustainable tourism through a historical and cultural lens. Her consulting company, Hargrove International, Inc., focuses on cultural heritage tourism assessment, planning, development, and management. In the past decade, her firm has assisted more than 150 destinations, byways, governments, and businesses. Hargrove authored Cultural Heritage Tourism: Five Steps for Success and Sustainability (Rowman & Littlefield, May 2017) as part of the American Association for State & Local History book series. Her

new book, Authentic America: 250 Distinctly American Places to Explore (Bloomsbury Publishing), launched in January 2026. Her third book, Preserving and Promoting Personality of Place: Utilizing Cultural and Historic Assets to Enhance Destinations, is scheduled for publication in Spring 2027.

Dominique M. Hawkins



Dominique M. Hawkins, FAIA, NCARB, LEED AP In 1995, Dominique established Preservation Design Partnership as a planning and design practice focusing exclusively on offering high-quality professional services for clients with nationally significant historic sites and buildings. Her work is at the forefront of addressing change at historic buildings and settings whether through design, the regulatory process, or the impacts of climate change and flooding at historic properties. From small projects to multi-million-dollar undertakings, Dominique's work has maintained the highest standards of planning, design, and preservation, resulting in long-lasting relationships, some of which span over a decade of continuous involvement and service that has been recognized with

several awards. She has served on the Philadelphia Historical Commission, chaired the Architectural Committee and was a member of the Financial Hardship Committee. In 2022, Dominique was the recipient of the Harley J. McKee Award for outstanding contribution to the field of preservation technology, the highest honor of the Association for Preservation Technology International. She currently serves on the Board of the National Center for Preservation Technology and Training.

Margaret M. Hickey



Margaret M. Hickey, AIA, serves as Principal Historic Preservation Specialist at Connolly & Hickey Historical Architects, an architecture firm based in Cranford, New Jersey. She holds a Bachelor of Architecture from the New Jersey Institute of Technology and a Master of Science in Historic Preservation from Columbia University. Ms. Hickey has been a principal of Connolly & Hickey since 2003 and is responsible for ensuring that all work undertaken by the firm is consistent with the Secretary of the Interior's Standards for the Treatment of Historic Properties. Her professional responsibilities include the design and oversight of publicly funded historic restoration and rehabilitation projects; assisting public, nonprofit, and private clients with the acquisition,

administration, and compliance requirements of preservation grant funding; and the preparation of historic preservation plans and nominations to the New Jersey and National Registers of Historic Places.



HUNTER RESEARCH HISTORICAL RESOURCE CONSULTANTS



**Historical Research
Archaeological Investigations
Architectural Studies
Preservation Planning
Historic Exhibits
Educational Outreach**

120 West State Street, Trenton, NJ 08608-1102
phone: 609.695.0122 email: hri@hunterresearch.com
www.hunterresearch.com

Kathleen “Katie” Humphreys



Kathleen “Katie” Humphreys has been the Registrar for the Morris County Park Commission (MCPC) since 2017, managing its historic artifact, image, and archival collections. She began her public history career over 15 years ago following time as a teacher. Her current work focuses heavily on public service – what are the activities of registration, historic preservation, and exhibition that provide the most value to the public. This focus has led to work ranging from exploring the interconnectedness of museum, archival, library, and historic preservation disciplines to utilizing holistic planning models for supporting the welfare of historic structures and collections across the MCPC’s diverse holdings. As part of that she was a key participant in the two-phase NEH

funded research project, Sustainable Management of Collections Environments with Limited Controls.

Richard W. Hunter



Richard W. Hunter, Ph.D., RPA, is the founder of Trenton-based cultural resources consulting firm, Hunter Research, Inc. He has over 40 years of experience directing historic preservation projects in the northeastern United States. His experience is in the fields of historical and industrial archaeology and historical geography, with research interests in the Revolutionary War, water-powered industry and pottery manufacture. Richard is a Registered Professional Archaeologist. He currently serves on the Mercer County Cultural and Heritage Commission and is a past President of Preservation New Jersey, the Hopewell Valley Historical Society and the Trenton Downtown Association. Within the past year, he has overseen completion of a historic properties management plan for Washington Crossing State Park and is working on an update of the Delaware and Raritan Canal State Park Master Plan. On behalf of Somerset County, Richard is currently leading the company's collaboration with Monmouth University in organizing the Lord Stirling Manor Archaeological Field School.

Jen Janofsky



Jen Janofsky, Ph.D. is the Giordano Fellow in Public History at Rowan University and Director of Red Bank Battlefield Park. She is the co-director of the Red Bank Archaeology Project, which made 2022 world headlines with the discovery of a Hessian mass burial. Janofsky earned her Ph.D. in Early American History and Public History from Temple University. She is a Postdoctoral Fellow at the McNeil Center for Early American Studies at the University of Pennsylvania. At Red Bank Battlefield Park, she oversees public programs, tours, preservation, exhibitions, and grants management. At Rowan University she teaches classes in Public History, American Material Culture, Early American History and directs the History Department Internship Program. Her over twenty years of public history work prioritizes community engagement and the production of accessible history. She is a recipient of the 2022 Daughters of the American Revolution Award for Excellence in Community Service, the 2023 Sons of the American Revolution Silver Good Citizenship Medal, and the 2024 Rowan University Engagement Award.

Kathleen L. John-Alder



Kathleen John-Alder is an associate professor in the Department of Landscape Architecture at Rutgers University and a Fellow of the American Society of Landscape Architects. The author of *Ian McHarg* and *the Search for Ideal Order*, her essays have appeared in *Landscape Journal*, *JoLA*, *the Journal of Planning History*, *Site/Lines* and *Manifest*. John-Alder has received professional awards from the Van Alen Institute, the National Park Service, and the American Society of Landscape Architects for work that explores the interplay of environmental perception, representation, and design.

She holds a BA from Oberlin College, a BS in environmental planning and landscape architecture from Rutgers, an MS in botany from Pennsylvania State University, and an MS in environmental design from Yale School of Architecture.

William L. (Larry) Kidder



William L. (Larry) Kidder received bachelor's and master's degrees from Allegheny College in Pennsylvania. Now retired, he taught high school history for forty years in both public and private schools. For more than thirty-five years, Larry has volunteered at the Howell Living History Farm in Hopewell, New Jersey, serving as an historian, interpreter, and draft horse teamster. Active in historical societies in Ewing and Hopewell (former president of both), Larry has given talks in New Jersey, New York, Virginia, and Pennsylvania. He continues to be a consultant to historic sites in central New Jersey including The William Trent House, the Old Barracks, Washington Crossing Historic Park (PA), and Washington Crossing State Park (NJ). He is also a consultant and battlefield tour guide for the Princeton Battlefield Society. As a founding member of the non-profit

TenCrucialDays.org, he narrates full-day bus tours. Larry has authored six books focusing on the American Revolution in the central New Jersey region.

Margaret Kirby



Over the years Margaret Kirby has taught in three academies sponsored by the Sisters of Charity of Saint Elizabeth. Additionally, she has served in two parishes as the Director of Religious Education with the responsibility of preparing students enrolled in public schools to receive the sacraments of the Catholic Church and has served as a parish minister in two parishes. From 1997 to 2015 Peggy taught theology at the Academy of Saint Elizabeth at Convent Station. A highpoint of those theology courses was a visit to Holy Family Chapel to introduce the students to its many beautiful aspects and to answer the girls' questions.

Will Krakower



Will Krakower is the Resource Interpretive Specialist at Princeton Battlefield State Park, acting as the chief historian and site manager since 2018. He is a graduate of Rutgers University with a BA and MA in History, with a specialization in Public History. He has spent the last decade working with the New Jersey State Park Service, researching and educating the public about the American Revolution at various sites including Princeton Battlefield, Washington's Crossing, and the Batsto Iron Works. With a wide variety of 18th and 19th century interests, Krakower has written and presented on numerous topics including the history of 18th century firearms, individual histories, and military history in general. A New Jersey native, he takes great pride in promoting New Jersey history.

**Special Roofs...
Our Specialty!**

Since 1947, Fania has delivered quality roof replacements, maintenance, repairs and installations to thousands of satisfied customers. No matter what type of roof you have - shingles, tiles, wood, or any type of metal - Fania is your best choice for roofing services.

FANIA
ROOFING COMPANY
The National Institute for Roofing Excellence

Call us at: 908-339-8151
at www.FaniaRoofing.com

Roofing Professionals Dedicated to
Customer Satisfaction Since 1947
All Roof Repairs/Replacements Fully Insured

Rev. Dr. Wanda M Lundy



Rev. Dr. Wanda M Lundy is an ordained Presbyterian (USA) minister with 39 years of experience in pastoral, institutional, and academic ministry. She serves as adjunct faculty at Union Theological Seminary and site coordinator for the Master of Professional Studies Program at Bedford Hills Correctional Facility for Women in New York. Dr. Lundy is Director of Operations for the Greater Elizabeth Chamber of Commerce and the Elizabeth Destination Marketing Organization. Her current research centers on 313+ free and enslaved African people buried in unmarked graves at the Old First Presbyterian Church cemetery in Elizabeth, NJ. She leads efforts to honor their legacy through a public monument. Her upcoming book, *Creating ACTS*

Communities: Personal & Community Transformation, will be published this fall. She has traveled extensively, including to Cuba, Brazil, Israel, Ethiopia, Ghana, Nigeria, Honduras, Senegal, and Korea. She is married to jazz musician Curtis Lundy and is the proud mother of Love and Luqman.

Joe Macasek



Joe Macasek is President of the Canal Society of New Jersey and former President of the Roebling Chapter of the Society for Industrial Archeology. He is an appointed member of the Morris County Heritage Commission and serves on the board of the Friends of Historic Speedwell. Joe is the author of *Guide to the Morris Canal in Morris County* and has led a regular series of Industrial Heritage Walks as a program of the Morris County Park Commission. He holds a Bachelor of Fine Arts in Design from the Pratt Institute and is sole proprietor of Mac Graphics in Morristown, NJ.

Newark Landmarks

Commissioner Melonie Marano



Commissioner Melonie Marano is currently serving on the 7th year as a Somerset County Commissioner. Ms. Marano previously served on the Green Brook Township Committee for six years including one as Mayor. She has served on the Cultural and Heritage teams at both the local and county levels for all years of her terms.

Kate Marcopul



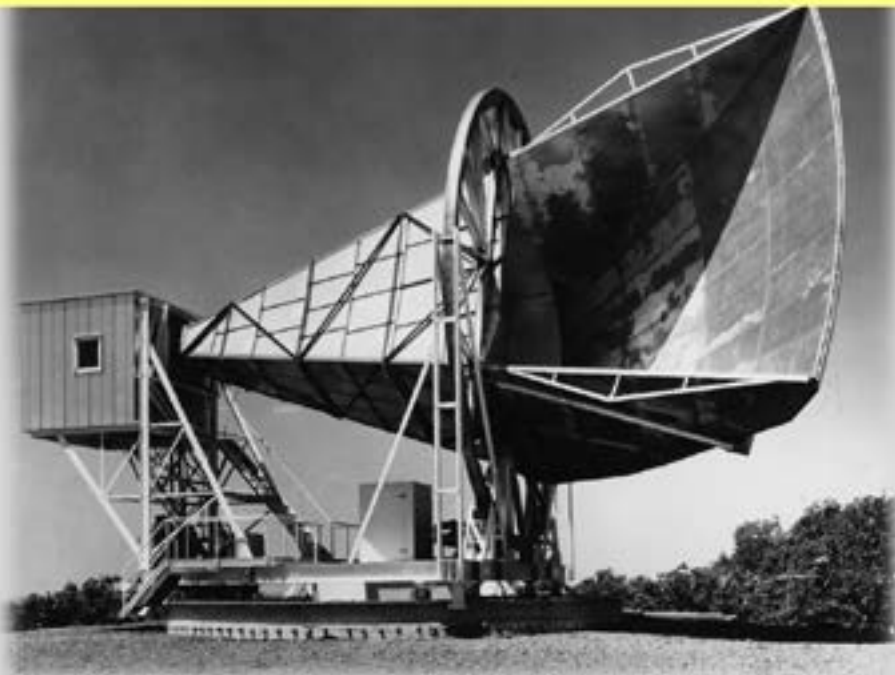
Kate Marcopul is currently the NJ Deputy State Historic Preservation Officer and the Manager of the New Jersey Historic Preservation Office (NJHPO) where she oversees the programs of the NJHPO. The NJHPO administers the federal and state historic preservation program in New Jersey including review and compliance under state and federal law, the NJ and National Register program, the federal historic rehabilitation tax credit program, the Certified Local Government program, and the historic property survey and inventory programs. Dr. Marcopul holds a Ph.D. and M.A. in Anthropology from Temple University, a B.A. in Anthropology from Indiana

University of Pennsylvania, and is a Certified Public Manager. She is also currently a member of the board of the National Conference of State Historic Preservation Officers, represents the Commissioner of the Department of Environmental Protection as an ex-officio board member of the NJ Historic Trust, and serves as an ex-officio member of the NJ Historical Commission.

Bill Marsch



Bill Marsch is a development Specialist with the Princeton Battlefield Society responsible for programming, operations, fundraising, and marketing. Primary annual programs include Experience the Battle of Princeton, Young Patriots Day, Revolutionary Sundays, Cadwalader Lecture Series, and the Mercer Oak Award.



The Holmdel
Horn Antenna,
1957-64

National Historic
Landmark, 1989

Dr. Robert Wilson Park
Holmdel, NJ



Michael Calafati Architect, LLC

510 Bank Street
PO Box 2363
Cape May, NJ
08204

609 884 4922
www.calafati.com

In 1964, Bell Labs astronomers Dr. Robert Wilson and Dr. Arno Penzias discovered Cosmic Microwave Background Radiation, conclusive evidence in support of the Big Bang Theory which earned them the Nobel Prize in Physics in 1978. As Bell Labs reduced its operations in Holmdel, the property was eyed for residential redevelopment. Fortunately, in response to local and international outcries, Holmdel Township officially acquired 35 acres of the Crawford Hill property in 2024 to preserve the Horn Antenna for future generations.

Dolly L. Marshall



Dolly L. Marshall is a native of Camden with ancestral roots stretching back to the 1840s, deep familial ties throughout South Jersey. Ms. Marshall serves as the city's Historian and Historic Preservation Specialist. Bridging the gap between past and present through meticulous research and evocative storytelling, she brings the African American experience and the African diaspora to the forefront of local history. Currently, Ms. Marshall leads vital community partnerships and collaborates with the New Jersey Historical Commission's Black Heritage Trail to identify overlooked narratives, crafting historical markers to ensure these essential stories remain a

visible and permanent part of New Jersey's landscape. A trustee of the Mount Peace Cemetery Association in Lawnside, her advocacy secured recognition as a National Underground Railroad Network to Freedom site and listing on the NJ Black Heritage Trail and the African American Civil Rights Network. Ms. Marshall's public service has been recognized by the National Trust for Historic Preservation, Preservation Alliance for Greater Philadelphia, the NJ Daughters of the American Revolution, Preservation New Jersey, the New Jersey Legislature, Rutgers University, the NJ Historical Commission, and the United States Congress.

C. Aidita Milsted



C. Aidita Milsted currently serves as Director of Historic Preservation at the New Jersey Economic Development Authority (NJEDA) where she is responsible for the implementation and management of Historic Preservation and Real Estate programs and initiatives within the Authority, including the Historic Property Reinvestment Program. Prior to joining NJEDA, she worked at the New Jersey Schools Development Authority (NJSDA) where she served in numerous roles including Director of Vendor Development, managing vendor regulatory processes, and providing training

and assistance to vendors seeking NJSDA work, and Program Director, overseeing a multidisciplinary team responsible for management of construction projects. She originally joined NJSDA as Senior Historic Preservation Specialist, through an employment sharing agreement with the New Jersey Department of Environmental Protection (DEP) and was stationed at DEP's Historic Preservation Office. She holds a Bachelor of Architecture from the University of Miami, and a Master of Science in Historic Preservation from the University of Vermont.

The Perfect Storm!

Innerglass® Interior Storm Windows:

Maintain the charm and beauty of your existing windows

Significantly reduce heating and cooling bills

Compression-Fit to eliminate drafts completely

Greatly reduce outside noise

Are perfect for enclosing screen porches

Save energy, save money and save history!



Innerglass®

Window Systems, LLC

The Compression-Fit Advantage

1-800-743-6207

www.stormwindows.com



Anne Motto



Anne Motto is F.M. Kirby Curator of Collections at Morris County Historical Society (MCHS) and serves as one of two senior staff in the organization. She joined MCHS in 2019 and as a result of her achievements was awarded an F.M. Kirby Curatorship in 2024. In her role, Ms. Motto successfully secured nearly \$450,000 in funding for the interior restoration of Acorn Hall, oversaw the conservation of a nationally significant 19th-century stained-glass memorial window, and dramatically improved the documentation and organization of MCHS's extensive collections and archives. Since 2021, she has spearheaded and managed a weekly blog and social media series that has brought new interest, awareness, and recognition to MCHS, its mission, and expanding collections. Ms. Motto holds a B.A. in Anthropology from the University of Michigan. Noted for her research and exhibits, she has worked as both a curator and educator in local museums for nearly 20 years.

Stephen Nagiewicz



Stephen Nagiewicz is a certified technical scuba diver, USCG Licensed Ships Master. Steve is a Fellow and former Executive Director of the Explorers Club, managed the State of New Jersey's Marine Science Laboratory and Former Chairman for Shark Research Institute. Now a retired high school science teacher, he is currently an adjunct professor of Marine Science at Stockton University and lecturer at Monmouth University. He is a registered professional marine archaeologist with over 40 years of underwater experience. He has authored and co-authored: *Hidden History of Maritime New Jersey*, 2016, ROBERT J. WALKER. *The History and Archaeology of a U.S. Coast Survey Steamship* 2020, and a chapter contributor in; *Citizen Science in Maritime Archaeology* 2023, *The Archaeology of the American Revolution* 2025 and *International Horseshoe Crab Conservation and Research Efforts*, 2007-2020. Steve has appeared on television episodes on National Geographic, Discovery, Science Channel, PBS, and many network news broadcasts sharing his expertise and passion for ocean conservation with millions of viewers.



Sister Noreen Neary



Sister Noreen Neary has spent thirty-three years teaching chemistry and physics to young women, in 2012 Sister Noreen Neary accepted the position as the Director of Archives for the Sisters of Charity of Saint Elizabeth. While her attention to detail and organizational skills are well used in the archives, Sister Noreen particularly enjoys researching the history of the Congregation, the lives of nearly three thousand Sisters of Charity, and their works that have carried and continue to carry the mission forward during the past 167 years.

Eric Nelsen



Eric Nelsen was hired as a seasonal employee at the Palisades Interstate Park in New Jersey in 1992. He earned a degree in English from Montclair State University in 1997, and the next year became a full-time public historian at the park. He oversees the park's historic Kearney House, where he's helped to develop a unique "living history" program based on the house's role as a nineteenth-century Hudson River tavern and homestead. In the office, he helps develop interpretive programming and supervises park publications, including brochures, maps, and interpretive signs. On days off, Eric enjoys being outdoors, getting into or onto the water, cycling, and time travel.



Darley Newman



Darley Newman is a creator, author, and explorer known for multiple Emmy Award-winning PBS series and her iHeart podcast. She’s blended world-record feats with bold, quirky adventures—from leaping off the world’s highest commercial bungee in Macao to biking WWI battlefields in France and riding horses across the globe—chasing stories that reveal the spirit of place and people. As the host and producer of *Travels with Darley*, *Equitrekking*, and *Look Up with Darley*, she merges travel, history, and narrative to uncover hidden gems across the U.S. and around the world. Her series and podcast air on PBS, Amazon Prime, iHeart, and internationally in 85+ nations. Having filmed in over 30 countries and 26 states, she inspires audiences to explore with purpose. In 2026, she releases her 12th “Revolutionary Road Trip” episode of *Travels with Darley* and a book commemorating history and travel with lesser-known American Revolution stories, including two chapters featuring South Carolina.

Mark Nonestied



Mark Nonestied is the Middlesex County Historian and a Division Head with the Middlesex County Division of History and Historic Preservation. He oversees both East Jersey Old Town Village and the Cornelius Low House Middlesex County Museum in Piscataway, NJ. Mr. Nonestied has lectured and written on a number of topics related to New Jersey and Middlesex County history. He is the co-author of *New Jersey Cemeteries and Tombstones: History in the Landscape*, published by Rutgers University Press and the recipient of the 2010 New Jersey Studies Academic Alliance Award, non-fiction scholarly category and has received an Award of Recognition by the New Jersey Historical Commission for outstanding service to public knowledge and preservation of the history of New Jersey.

Annabelle Radcliffe-Trenner



Annabelle Radcliffe-Trenner founded Historic Building Architects, LLC, Trenton, NJ, an award-winning firm specializing in historic public buildings, over 30 years ago. She was trained as a preservation architect in Scotland and then at ICCROM in Rome. She is a Fellow of Association Preservation Technology International. Annabelle has a keen interest in long-term planning and intervention ethics at heritage sites. Eager to educate the public, she lectures on preservation issues internationally. One of her interests is the use of technology, material analysis and NDE science to supplement the visual understanding and planning for the preservation of buildings. She has been interviewed on National Public Radio and NJ Television on historic preservation issues, and about restoration following the fire at Notre Dame Cathedral, by NBC and Fox Business News. Recent projects include Castle Hill Restoration, which received the 2025 Preservation Massachusetts Frederick Law Olmsted Award, The Olson House HSR, and the restorations of Dr James Still, Indian King, Hennessy Hall, Building 56 Fort Hancock, and the Museum of Early Trades and Crafts.

Ronald P. Rinaldi



Ronald P. Rinaldi is a historian and educator who has studied American history for 50 years. He holds a B.A. degree from George Washington University in American Studies, an M.A. from Duke University in Military History, and an Ed. D. in Educational Leadership from Nova Southeastern University. Ron has worked at a number of revolutionary war sites: The Old Barracks, Washington Crossing State Park, and Valley Forge National Historical Park. During the Bicentennial (1976-1983) he served as a member of The Egg Harbor Guard and the Bergen County Militia. Today, Ron is the Executive Director of The Center School, a private special education school in Somerset, New Jersey. Ron is also currently an executive board member of the Washington Crossing Park Association of NJ, and a member of the north Jersey Militia group Outwaters Militia. He loves to share his knowledge by giving presentations to historical groups and schools as a continental soldier, militia soldier, General Nathanael Greene, or General George Washington.



PULLMAN



Ted Ritter



Ted Ritter is the External Affairs Manager for the North Jersey Transportation Planning Authority. He represents the NJTPA at official meetings, conferences, and special events; develops creative videos and presentations; and manages innovative, award-winning public engagement initiatives. Prior to joining the NJTPA, Ted worked as a radio news anchor, writer, and reporter. He holds a Master's Degree in Journalism and Public Affairs from American University and a Bachelor's Degree in Political Science from Niagara University.

Denise Rompilla



Denise Rompilla, PhD, is a historian, curator, and public history consultant specializing in women's history, African American history, and historic preservation. Her work centers on archival research, interpretive scholarship, and the integration of underrepresented histories into historic sites and public institutions. She currently serves as Project Historian for the African American History and Historic Sites Survey of Morris County and as the Project Historian and Interpretive Specialist for the Revolutionary War-era site 120 East in Trenton. For the past three years, she has directed The Revolutionary

She, a digital public history initiative funded by the New Jersey Historical Commission and developed with Honors students at Middlesex College. Prior to relocating to New Jersey, Rompilla was Manager of Interpretive Strategy at the Alice Austen House Museum in Staten Island, where she helped lead a major reinterpretation of the site through the lenses of women's history, immigration, and LGBTQ+ history.

Rachael Glashan Rupisan

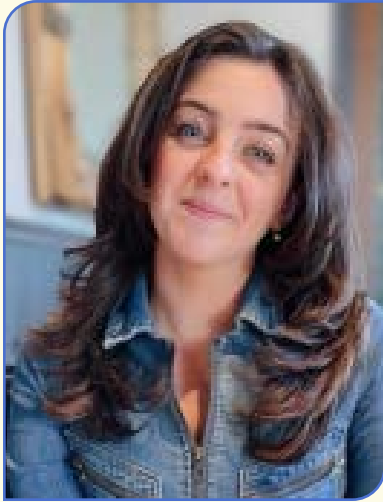


Rachael Glashan Rupisan is a nonprofit executive and strategic leader working at the intersection of gender equity, art, culture, history, and civic engagement. As Executive Director of the Alice Paul Center for Gender Justice, she has transformed the organization since 2019 through a full rebrand, expanded mission, strengthened development and public programs, and major philanthropic growth, positioning Paulsdale as a nationally significant site for feminist storytelling and intergenerational leadership. Her career spans the arts, cultural heritage, and social-impact sectors, with experience leading capital and preservation projects,

producing exhibitions and public programs, building youth civic initiatives, and advancing feminist narratives. She is a recognized voice in the national movement to advance the Equal Rights Amendment, having spoken at rallies nationwide and partnered with ERA champions to educate and mobilize communities. Rachael serves on committees and boards including Dance/USA, the New Jersey History Conference, Philadelphia 250 Women's Committee, and the Forum for Executive Women's Pay Equity Committee. A recipient of multiple leadership honors, she holds a BFA from Temple University and a Women in Leadership certificate from Yale University.



Josephine T. Taranto



Josephine T. Taranto holds a dual Bachelor of Arts degree from Salve Regina University (Newport, RI) in Cultural & Historic Preservation and Art History. With a background in art history and a passion for sustainability in historic architecture, she found a natural fit in the field of historic preservation. Josephine is a preservation planner for Somerset County, where she oversees the County's Historic Preservation Grant Program, monitors project funding, and ensures compliance with government processes and documentation. Her early experience as an archaeological field technician introduced her to mapping and ground-penetrating radar work, broadening her technical understanding of preservation practices. In her current role, Josephine also engages with land use planning, the Cultural & Heritage Commission, Open Space Committee, and handles Section 106 review responses on behalf of the County. She is actively working toward becoming a licensed planner and is proud to serve on Preservation New Jersey's Board of Trustees.

Chris Testa



Chris Testa is the civilian manager of the Hazard Mitigation Unit, which is housed within the Recovery Bureau of the New Jersey State Police. Chris coordinates Hazard Mitigation Planning at the local level, supplying technical assistance and reviewing plans prior to submission to FEMA. Mr. Testa was OEM's lead in the development of the 2014 and 2019 NJ State Hazard Mitigation Plans. Prior to NJSP, he was employed by specialty contractor Henkels and McCoy as an Environmental Manager on PSEG Electrical Transmission projects. Following DR-4021, the remnants of Hurricane Irene, Chris worked as a Community Hazard Mitigation Planner for FEMA. At home Chris is a Husband, Father of two, and women's lacrosse coach.

Andrea Tingey



Andrea Tingey is a Program Specialist 3 with the New Jersey State Historic Preservation Office. Her current responsibilities include coordinating the New Jersey / National Register Program and the Certified Local Government Program. She previously coordinated the Survey and Outreach Programs. Additionally, she spent 11 years working on Transportation and Planning projects, developing expertise in the regulatory review of bridge projects, identifying and evaluating a broad range of historic property types. Ms. Tingey also coordinated the establishment and publication of New Jersey's first statewide guidelines for architectural survey activities and taught the Introduction to Historic Preservation course at Drew University for six years. She taught American Architectural History as part of the Preservation Certificate program at Rutgers University-Camden for 4 years. Over the years she has developed a particular interest in recent past properties. In 2018, Ms. Tingey was honored to receive an award of recognition from the New Jersey Historical Commission. Ms. Tingey received a BA in history from Dickinson College and did her graduate work in historic preservation planning at Cornell University.

Mark A. Turdo



Mark A. Turdo has been a living history interpreter since he was twelve years old. Since then, he has interpreted the lives of soldiers, farmers, and missionaries at historic sites throughout the east coast. He has helped organize some of the largest Revolutionary War reenactments, appeared in a number of documentaries, and was a military consultant for the movie *The Patriot*. Since 2023, he has been the Assistant Director of Interpretation & Curation at the Old Barracks Museum, where he oversees daily living history programs, organizes the annual Battle of Trenton reenactment, and is part of the planning group for the Ten Crucial Days 250th event.

Dr. Synatra Smith



Dr. Synatra Smith (Project Manager for the New Jersey Black Heritage Trail, New Jersey Historical Commission) is a cultural anthropologist exploring extended reality (XR) and other digital tools to enhance special collections and archival records featuring African American art, history, and culture with the specific intention of documenting workflows that can be shared with students, cultural heritage workers, and scholars interested in building digital projects without relying on a large budget or team. She sits at the intersection of researcher; gallery, library, archives, and museum (GLAM) professional; and digital humanities practitioner. Storytelling and narrative-

building are central to that experience, and her goal is to identify ways to engage target user communities throughout the life of these projects through more inclusive means that integrate feedback loops and myriad learning styles.

Steven Smolyn



Steven Smolyn is an architect and preservation consultant specializing in historic design guidelines, architectural surveys, and regulatory review for municipalities throughout New Jersey. He has authored and updated multiple local historic preservation ordinances and design guidelines and regularly advises Historic Preservation Commissions on complex rehabilitation, addition, and adaptive reuse projects.

Deborah Farrar Starker



Deborah Farrar Starker is the Executive Director of the Museum of Early Trades & Crafts (METC) in Madison. She also serves as the mayoral appointed Commissioner for Madison's Downtown Development Commission. Previously she was the Vice President for Programs & Exhibitions at the Morris Museum, and President of the Madison Arts & Culture Alliance. Prior to her career in the non-profit sector, Deborah worked in international marketing and publishing. She holds an M.A. in Museum Professions from Seton Hall University and a B.S. from the NYU Stern School of Business.

Richard Veit



Richard Veit, Ph.D., serves as Provost and Senior Vice President for Academic Affairs at Monmouth University. An experienced academic leader, he previously served as Associate and Interim Dean of Monmouth's Wayne D. McMurray School of Humanities and Social Sciences. He received his BA summa cum laude from Drew University, his MA from the College of William and Mary and his Ph.D. from the University of Pennsylvania. Dr. Veit's research focuses on the historical archaeology of the Middle Atlantic Region from the 17th through 19th centuries. Two of his books, *Digging New Jersey's Past* (Rutgers 2002) and *New Jersey: A History of the Garden State* (co-edited with Maxine Lurie; Rutgers 2012)) are listed on the New Jersey State library's 101 Great New Jersey books list. He is President of the Society for Historical Archaeology, past chair of the Council for Northeast Historical Archaeology and serves as a gubernatorial appointee to the New Jersey Historical Commission. His research has been featured in PBS documentaries, on NPR's academic minutes, and in *Archaeology Magazine* and he has been a TED speaker.

He is President of the Society for Historical Archaeology, past chair of the Council for Northeast Historical Archaeology and serves as a gubernatorial appointee to the New Jersey Historical Commission. His research has been featured in PBS documentaries, on NPR's academic minutes, and in *Archaeology Magazine* and he has been a TED speaker.

IT IS AN HONOR
AND A PLEASURE
TO SUPPORT THE
NEW JERSEY HISTORY & HISTORIC
PRESERVATION CONFERENCE.

William C. Sullivan, Jr.
PARTNER

wsullivan@sh-law.com
201-896-7215

**NEW JERSEY
HISTORY &
HISTORIC
PRESERVATION
CONFERENCE**

**SCARINCI HOLLENBECK,
ATTORNEYS AT LAW**

www.sh-law.com
info@sh-law.com
201-896-4100

Peter Viteretto



Peter Viteretto, Principal, PLA, FASLA, leads the Heritage Landscapes LLC office in Norwalk, Connecticut, where he has been directly involved in award-winning national and international landscape rehabilitation and preservation projects. He has been engaged with Morris County Park Commission throughout the four-phased restoration of Martha Brookes Hucheson's landscape since 2001, including the current Gardens and Orchard Landscapes restoration work. Heritage Landscapes LLC's work on over 300 historic landscapes integrates compatible new design within historic settings that renew and strengthen historic character. Over 90 professional firm awards attests to the quality of work. Prior to his work at Heritage, Viteretto contributed to

numerous public urban landscapes with the architectural firm Cesar Pelli & Associates, and the landscape architectural firm Balmori Associates Inc., both of New Haven, CT. Viteretto serves as a member of the City of Norwalk's Urban Forestry Commission, the ASLA-CT representative on the Merritt Parkway Advisory Committee with CT DOT, and is currently the ASLA-CT Chapter Trustee, furthering the awareness and values of landscape architecture in the community and nationally.

Michael Wierzbicki



Michael Wierzbicki is a Senior Project Officer within the Historic Preservation Department at the New Jersey Economic Development Authority (NJEDA). Since joining the NJEDA in 2021, he has been involved in the development and implementation of the Historic Property Reinvestment Program (HPRP). In his current position, he is tasked with review of HPRP applications and providing technical assistance with regards to requirements associated with construction management, construction cost estimates, and project

schedules. Michael has over 22 years of experience in the field of construction management. Prior to joining the NJEDA, he worked in the private sector for a general contracting and engineering company where he served in numerous roles including Assistant Manager of Procurement, Project Manager, and Junior Estimator.



POSTER EXHIBITORS

STUDENT PARTICIPANTS

The Student Poster Competition is sponsored by the New Jersey Council for the Humanities. To be eligible for the competition, participants must currently be enrolled in an undergraduate/graduate program or have graduated in the past 2 years (Class of 2024 to present).



The Archaeology of the Vermeule-Mundy House

Tyler Bane, Daniel Esposito, Matt Fisch, and Alex Mytnik
Monmouth University

Barr Spangler (1822-1922) & The Prohibition Party

Eric Schubert
Millersville University of Pennsylvania

Creating a Digital Archive for a Small Cultural Heritage Institution

Katharine Rubinetti
Johns Hopkins University

A Cultural Resource Survey Update of Morris County

Georgia Seehaus
Hartgen Archaeological Associates (Roger Williams University)

Dressing the Revolution: Creating Accessibility Through Hamilton's Costumes

Gloria Schulz
Rowan University

The Effects of Social Media on Heritage Sites

Karin Glorius-Patrick
Brandenburgische Technische Universität Cottbus-Senftenberg

NAPALM: The Incendiary That Ignited Union College

Gabriel Naravaez and Vanessa Kariotis
Union College of Union County

Newark Changing: Mapping Neighborhood Demolition

Myles Zhang
University of Michigan: College of
Architecture & Urban Planning

The Ribbon

Ivonne Alejandra Cordier Gavancho
Rutgers University: Bloustein School
of Planning and Public Policy

Sidewalk Stories

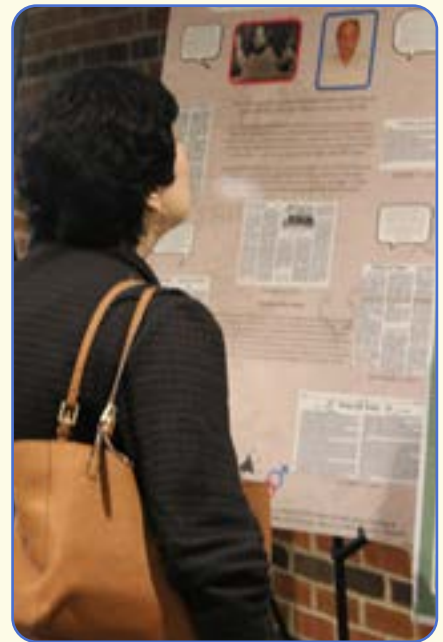
Liz Farias
Emerson College

Union College of New Jersey: The Elizabeth Campus and An Opportunity for the Union County Population

Ricardo Munoz and Prizith Marin
Union College of Union County

Upstage(d) in History

Carlee Migliorisi
Monmouth University





JOURNEY THROUGH JERSEY

Welcome to Morris County, a captivating blend of history and natural beauty nestled in the heart of New Jersey. Established in 1738/39 and named after Governor Lewis Morris, this area was a pivotal site during the American Revolution, earning its title as the Military Capital due to General George Washington's winter encampments near Morristown. Once a titan in the iron ore industry, Morris County has evolved into a modern hub for research, pharmaceuticals, and light manufacturing. Visitors can explore sprawling parks and recreational areas managed by the Board of County Commissioners, offering a serene escape amid suburban settings. With 39 diverse municipalities spread across 477.8 square miles, this region is rich in cultural attractions, boasting numerous museums and educational institutions, including three universities and a county college. Whether you're traveling along its major highways or riding the rails, Morris County's extensive transportation network ensures easy access to its historical landmarks and vibrant communities, making it an ideal destination for history buffs and nature enthusiasts alike.





Acorn Hall

ACORN HALL

Acorn Hall, originally built in 1853 and remodeled in 1860 in the Victorian Italianate villa style, showcases upper middle-class life in late-19th century Morristown with its preserved 19th-century furnishings and decorative arts. Listed on the New Jersey State and National Registers of Historic Places and part of the New Jersey Women's Heritage Trail, the hall's preservation is credited to the Crane-Hone women, with the Morristown Historical Society maintaining this legacy since acquiring it in 1972. Visitors can explore ornate Victorian rooms, a women's costume collection, formal gardens, current exhibitions, and access the Patriots Path trail.

Visitor Information: <https://www.journeythroughjersey.com/sites/acorn-hall>

AYRES/KNUTH FARM

The Ayres/Knuth Farm, continuously operated since 1793, is a 52-acre working farm showcasing one of the most complete examples of a 19th-century agricultural complex in Morris County, with 10 original buildings and structures like a smokehouse from 1825 and a restored farmhouse exterior from 1910. Listed on the New Jersey and National Registers of Historic Places, the farm illustrates the evolution of New Jersey agriculture, and the Ayres/Knuth Farm Foundation is dedicated to preserving its historical, agricultural, and environmental aspects. Visitors can explore the historic buildings, enjoy the woods and wetlands, and shop at the Union Hill Farms farm stand.

Visitor Information:

<https://www.journeythroughjersey.com/sites/ayresknuth-farm>

BAMBOO BROOK

Bamboo Brook, formerly Merchiston Farm, spans 687 acres and was home to William and Martha Brookes Hutcheson from 1911 to 1959. Martha Hutcheson, a pioneering female landscape architect, transformed the farm into a living laboratory featuring native plants, terraces, waterways, and gardens, influencing fields like civic horticulture and horticultural therapy. Listed on the New Jersey and National Registers of Historic Places, Bamboo Brook offers visitors the chance to explore its historic grounds, participate in seasonal programs, and take "The Spirit of the Garden" Cell Phone Tour.

Visitor Information:

<https://www.journeythroughjersey.com/sites/bamboo-brook-outdoor-education-center>



BRIDGET SMITH HOUSE MUSEUM

The Bridget Smith House Museum, built in 1855, is the last known mine worker's dwelling in the Irishtown mining community of Mine Hill. It features exhibits on the history of iron ore mining in the area since 1703 and the lives of the women and families who once lived there. Listed on the New Jersey and National Registers of Historic Places and the New Jersey Women's Heritage Trail, the museum is operated by The Ferromonte Historical Society of Mine Hill.

Visitor Information:

<https://www.journeythroughjersey.com/sites/bridget-smith-house-museum>

COOPER GRISTMILL

Cooper Gristmill, built in 1826 along the Black River, was central to Milltown's thriving industrial community during the Industrial Revolution and is the only restored water-powered mill in New Jersey. Listed on the State and National Registers of Historic Places, the Gristmill showcases the power of the Black River with a steel water wheel grinding grains into flour using massive millstones that can produce up to 800 pounds of flour per hour. Visitors can explore the social, agricultural, and technological aspects of 19th and early 20th-century life through guided tours led by period-clothed staff and take home stone-ground flour and cornmeal.

Visitor Information:

<https://www.journeythroughjersey.com/sites/cooper-gristmill>





Fosterfields Living Historical Farm

FOSTERFIELDS LIVING HISTORICAL FARM

Fosterfields Living Historical Farm offers an immersive experience of farm life from the 1920s, where visitors can participate in activities like collecting eggs and grinding corn, and interact with staff in period clothing to learn about the era. The farm, continuously operating since 1760, features The Willows, a Gothic Revival home built by General Joseph Warren Revere, and later renamed by Charles Foster. Donated by Caroline Foster in 1972 to the Morris County Park Commission, Fosterfields became New Jersey's first living historical farm, offering attractions like farm tours, wagon rides, and a Transportation Exhibit with antique automobiles.

Visitor Information:

<https://www.journeythroughjersey.com/sites/fosterfields-living-historical-farm>

GROWING STAGE AT THE HISTORICAL PALACE THEATRE

Growing Stage at the Historical Palace Theatre | The Palace Theatre, built in 1919, was a prominent entertainment venue in northwest New Jersey, hosting silent movies, vaudeville acts, and various live performances until the 1960s when it declined due to competition from television and multiplex theaters. In 1995, The Growing Stage purchased and restored the theatre, transforming it into a performing arts center with a 220-seat theatre, art gallery, and modern facilities. Now listed on the National Register of Historic Places, the Palace Theatre offers live performances, workshops, and an art gallery featuring historic photos and items from its storied past.

Visitor Information:

<https://www.journeythroughjersey.com/sites/growing-stage-historic-palace-theatre>



Historic Speedwell

HISTORIC SPEEDWELL

Historic Speedwell, known as the "Birthplace of the Telegraph," is a National Historic Landmark that preserves the estate of Stephen Vail, proprietor of the Speedwell Iron Works, capturing the essence of life in the early to mid-19th century. The site is notable for the factory where Alfred Vail and Samuel F.B. Morse perfected the electromagnetic telegraph, first demonstrated publicly in 1838, with interactive exhibits showcasing its development and impact on modern communications. Visitors can explore the historic Vail home, original outbuildings, and relocated Morristown homes through guided tours, events, and programs that illustrate 19th-century life and technological innovation.

Visitor Information:

<https://www.journeythroughjersey.com/sites/historic-speedwell>

KING STORE AND HOMESTEAD MUSEUM

The King Store offers a glimpse into late-19th century life through its well-preserved general store and post office, complete with period merchandise, a built-in icebox, and a wooden hoisting wheel for moving goods, situated within the Morris Canal Greenway. Across the landscaped yard lies the King Homestead, a Queen Anne-style residence from 1878, featuring rooms furnished to reflect Victorian-era customs, including a girl's bedroom and a dining room with landscape murals. Visitors can enjoy guided tours of these historical sites, explore goods at the King Store, visit a recreated schoolhouse, and relax on the porch imagining past days, while nearby Lock 2 East offers insights into the canal's operation.

Visitor Information:

<https://www.journeythroughjersey.com/sites/king-store-and-homestead-museums>

MACCULLOCH HALL HISTORICAL MUSEUM

Macculloch Hall, a Federal-style brick mansion on a 26-acre farm originally purchased by George Macculloch, has served the local community for over 200 years, first as a residence and since 1950 as the Macculloch Hall Historical Museum and garden. Known for its significant collection of works by 19th-century cartoonist Thomas Nast, the museum features nine period rooms, exhibition galleries, a classroom, and formal gardens. Visitors can explore the gardens, home to New Jersey's second oldest and largest sassafras tree, and participate in various educational programs, lectures, concerts, and poetry readings.

Visitor Information:

<https://www.journeythroughjersey.com/sites/macculloch-hall-historical-museum>

MAYO PERFORMING ARTS CENTER

The Community Theatre, designed by renowned architect Thomas W. Lamb and built in 1937, was a key part of Walter Reade's movie theatre chain until the 1980s. Reopened in 1994 as a performing arts center with a gala by the Kirov Orchestra and pianist Alexander Slobodyanik, it was renamed Mayo Performing Arts Center in 2011 to honor Bud Mayo's leadership. The center offers a variety of programs that entertain, enrich, and educate the community, supporting the economic vitality of Northern New Jersey, and hosts live performances, classes, and a rotating art gallery.

Visitor Information:

<https://www.journeythroughjersey.com/sites/mayo-performing-arts-center>





Morris Museum

MORRIS MUSEUM

The Morris Museum, established in 1913 and situated on 8.5 acres in Morris Township, New Jersey, is renowned for its dynamic art exhibitions and performing arts events. It houses a 45,000+ object collection of global art and culture, displayed in purpose-built spaces and the historic Twin Oaks mansion. As New Jersey's only Smithsonian affiliate, the museum features the Spark!Lab, a hands-on invention workspace for children, and offers various activities, including permanent exhibits, international art galleries, performances at the Bickford Theatre, and educational programs.

Visitor Information:

www.journeythroughjersey.com/sites/morris-museum

MORRISTOWN NATIONAL HISTORICAL PARK

Morristown National Historical Park, America's first National Historic Landmark, preserves key Revolutionary War sites, including the Continental Army's winter encampments and General George Washington's headquarters at the Ford Mansion. In the harsh winter of 1779-1780, Washington's soldiers endured difficult conditions at Jockey Hollow, while Washington himself stayed in town, highlighting Morristown's critical role in the War for Independence. Visitors can explore the Visitor Centers, tour the Ford Mansion, visit sites like Fort Nonsense and the Jockey Hollow Encampment, and enjoy hiking trails through the historic landscape.

Visitor Information:

<https://www.journeythroughjersey.com/sites/morristown-national-historical-park>

MUSEUM OF EARLY TRADES AND CRAFTS

The Museum of Early Trades and Crafts (METC) is dedicated to showcasing the history and culture of New Jersey from the colonial era through industrialization, featuring over 8,000 tools and artifacts predating 1860. Located in the historic James Library Building, a Richardsonian Romanesque structure listed on the New Jersey and National Registers of Historic Places, the museum offers both permanent and rotating exhibits, including "Working the Land: Life, Family & Change in Early 1800s New Jersey" and displays on tradesmen's tools. Visitors can explore these exhibits and the sidewalk gallery in the Educational Annex, gaining insights into the past's impact on modern life.

Visitor Information:

<https://www.journeythroughjersey.com/sites/museum-early-trades-and-crafts>

STICKLEY MUSEUM AT CRAFTSMAN FARMS

The 30-acre National Historic Landmark, Craftsman Farms, is the 1911 estate of Gustav Stickley, a leading figure in the American Arts and Crafts Movement, renowned for his "Craftsman" or "mission" furniture. The estate's centerpiece, the massive Log House, reflects Stickley's philosophy of building harmoniously with the environment using natural materials, and it served as his family home until 1915. Visitors can tour the restored Log House, view the North Cottage, and explore the meadows, walking trails, and other Stickley structures on the property.

Visitor Information:

www.journeythroughjersey.com/sites/west-hill-manor/





2026 CONFERENCE

PLANNING COMMITTEE

<i>Alexis Alemy</i>	Historic Preservation Specialist 1 and Archaeologist, <i>New Jersey Historic Trust</i>
<i>Jennifer Boggs</i>	Historic Preservation Specialist 1, <i>New Jersey Historic Trust</i>
<i>Shannon Bremer</i>	Historic Preservation Specialist 1, <i>New Jersey Historic Trust</i>
<i>Glenn Ceponis</i>	Executive Director, <i>New Jersey Historic Trust</i>
<i>Olivia Chaudhury</i>	Historic Preservation Specialist 1, <i>New Jersey Historic Trust</i>
<i>Thomas Connolly</i>	Principal Architect, <i>Connolly & Hickey Historical Architects</i>
<i>Amy Curry</i>	Executive Director, <i>Morris County Historical Society</i>
<i>Noel Dempsey</i>	Administrative Coordinator, <i>New Jersey Historical Commission</i>
<i>Kristin Downing</i>	Historic Preservation Specialist 1, <i>New Jersey Historic Trust</i>
<i>Timothy Hart</i>	Director, <i>Ocean County Cultural and Heritage Commission</i>
<i>Margaret M. Hickey</i>	AIA, Principal Historic Preservation Specialist, <i>Connolly and Hickey Historical Architects</i>
<i>Carrie Hogan</i>	Fiscal Officer, <i>New Jersey Historic Trust</i>
<i>Stephanie Kraut</i>	Historic Preservation Specialist 2, <i>New Jersey Historic Trust</i>
<i>Lynn Laffey</i>	Director of Historic and Interpretive Sites, <i>Morris County Park Commission</i>
<i>Thomas Loughman</i>	Executive Director, <i>Morris Museum</i>

Katherine J. Marcopul

PhD, Administrator & Deputy State Historic Preservation Officer, *New Jersey Historic Preservation Office*

Evelyn C. Murphy

PhD, Conference Coordinator, *Friends of New Jersey Heritage*

Judith Murphy

AICP, PP, Historic Preservation Specialist 3, *New Jersey Historic Trust*

Ashley Parker

Historic Preservation Specialist 2, *New Jersey Historic Trust*

Tara Ritz

Historic Preservation Specialist 1, *New Jersey Historic Trust*

Kelly Ruffel

Executive Director, *Preservation New Jersey*

Rachel Thimke

Programming and Communications Manager, *New Jersey Historical Commission*

Andrea Tingey

Program Specialist 3, *New Jersey Historic Preservation Office*

Nan Wakefield

Historic Preservation Specialist 1, *New Jersey Historic Trust*



EXPLORE THE MANY WAYS THE NEW JERSEY ECONOMIC DEVELOPMENT AUTHORITY (NJEDA) CAN SUPPORT YOUR PROJECT.

WWW.NJEDA.GOV | (844) 965-1125 | @NEWJERSEYEDA



COMMUNITY-
BASED
INITIATIVES

BROWNFIELDS
& ENVIRONMENTAL
JUSTICE

HISTORIC
PERSERVATION
TAX CREDITS

FINANCING &
INCENTIVES

NJEDA

ECONOMIC DEVELOPMENT AUTHORITY



**NEW JERSEY
HISTORY &
HISTORIC
PRESERVATION
CONFERENCE**

