



New Jersey History & Historic Preservation 2018 Conference

June 7–8, 2018 | njpreservationconference.org

PASSAIC COUNTY COMMUNITY COLLEGE | PATERSON, NJ

PRESERVATION

new jersey

Helping you manage change and preserve character in your community since 1978.

#SomeplaceNotAnyplace



@PreservationNJ



@PreservationNJ



@Preservation_NJ



Show us the “someplace” that tells the story of a part of New Jersey’s heritage that is important to YOU!

Congratulations to the recipients of the

**2018 NJ HISTORIC
PRESERVATION
AWARDS**

Check out this year’s list of the

**10 MOST ENDANGERED
HISTORIC PLACES IN NEW JERSEY**



www.PreservationNJ.org

Photo Credits: Friends of the Captain Tyson House; NJ Light House Society; Janice Keasbey; and Allen Knowles.

Welcome to the 2018 New Jersey History and Historic Preservation Conference in Paterson

Building a Place for History

We have wonderful partners in Passaic County and the City of Paterson that have helped shape an energetic and topical conference agenda. Over the course of two days, the conference offers local and county tours; discussions on redevelopment, diversifying fundraising efforts, and addressing public commemoration; and technical presentations on preserving building exteriors and protecting cultural assets from disasters. There are many additional educational sessions for professionals, heritage site stewards, historic preservation commissions, volunteers, and more.

For the first time, the Historic Preservation Awards will be incorporated into the conference agenda, held the afternoon of June 7. Hosted by the Historic Preservation Office/Historic Sites Council and Preservation New Jersey, the awards recognize the outstanding projects, people and innovative works that set the standard for preservation in the State.

The conference is especially pleased to welcome Lieutenant Governor Sheila Y. Oliver, who will start the day on June 8 with her take on the importance of history and historic preservation in New Jersey's public policy and economic development. A morning plenary panel of experts explores what role preservation can play in enhancing the financial, environmental, social, and cultural well-being of our communities for the future.

Also welcome to the students and new professionals taking part in the poster competition that will be on display in the Marketplace during the lunch break. They are the future leaders of our history and preservation professions!

Finally, if you see a conference participant with a green ribbon be sure to thank that person for their generous funding as a conference sponsor. Without the support of our partners and friends, this event would not be possible.

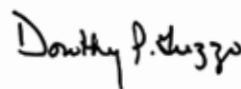
Best wishes for a successful conference!



Janet Foster

Chair

New Jersey Historic Trust



Dorothy P. Guzzo

Executive Director

New Jersey Historic Trust

BUILDING A PLACE FOR HISTORY

Conference Agenda

Day 1 | Thursday, June 7, 2018

TIME & LOCATION	ACTIVITY	AUDIENCE
10:00 to 11:30 AM Great Falls Welcome Center	Free Tours of Paterson: Paterson Great Falls, Overlook Park Project and Hinchliffe Stadium <i>Pre-registration is advised. Contact garchimede@patersonnj.gov</i>	
12:30 to 4:30 PM Leave from and return to Hamilton Club	W-1 Bus tour— Going Dutch: Preservation of a Regional House Type	
1:00 to 3:30 PM Hamilton Club	W-2 Discovery and Alignment: Pathways and Progress in Telling African American History as New Jersey History	
2:00 to 2:45 PM Great Falls Welcome Center	Free Tours of Paterson: Paterson Great Falls National Historical Park	
3:00 to 3:45 PM Paterson Museum	Free Tours of Paterson: Paterson Museum	
3:30 to 5:30 PM Hamilton Club	2018 New Jersey Historic Preservation Awards Ceremony	
4:30 to 7:30 PM Hamilton Club	Informal tours of Federici Sculptures and Workroom	
5:30 to 7:30 PM Hamilton Club	Opening Reception Guest Speaker: Leonard Zax	

Day 2 | Friday, June 8, 2018

TIME & LOCATION	ACTIVITY	AUDIENCE
8:00 to 9:00 AM PCCC Gymnasium	Registration, Breakfast, Marketplace	
9:00 to 9:30 AM PCCC Auditorium	Welcoming Remarks Lt. Governor Sheila Oliver, Freeholder Director Cassandra Lazzara	All
9:30 to 10:30 AM PCCC Auditorium	Opening Plenary Panel: Embracing the Future	All, AIA

AUDIENCE KEY

AIA	Architects (continuing education credits approved)
AICP	Planners (continuing education credits approved)
CRM	Cultural Resource Management Professionals
H	Historians
HPC	Historic Preservation Commission Members
NP	Non-profit Heritage Sites and Museums
M/C	Municipal and County Officials

TIME & LOCATION	ACTIVITY	AUDIENCE
10:45 AM to Noon	Choice of Educational Sessions	
Room 206 A&B	S-1 Creative Saves: Alternative Strategies for Preserving Historic Buildings	AICP, HPC, M/C, NP
PCCC Auditorium	S-2 Ready for Redevelopment?	AICP, M/C
Room 211 A	S-3 After the HPC Review: Working Toward More Effective Monitoring and Compliance	HPC
Room 210 A&B	S-4 The Future of Public Commemoration	H, NP, M/C
Meet at the doors outside of the PCCC Gymnasium	S-5 Architectural Walking Tour of Paterson's Downtown Commercial Historic District <i>(offered again in the afternoon)</i>	AIA AICP All
Noon to 2:00 PM PCCC Gymnasium	Lunch, Marketplace, Poster Exhibit & Award Presentation	
2:00 to 3:15 PM	Choice of Educational Sessions	
Room 206 A&B	S-7 Revenue Streams at Heritage Sites: Diversifying for the Future	NP
Room 208 A&B	S-8 Critical Care for Your Building's Envelope: Why It Deteriorates and How to Fix It	AIA, HPC, NP
Room 210 A&B	S-9 Making Place Queer: LGBTQ History & Preservation	NP, H
Room 211 A	S-10 Resiliency Planning for Flood Vulnerable Historic Resources	AIA, AICP, CRM
Room 213 A	S-11 Interdisciplinary Approaches to Cultural Resource Management	CRM, AICP
Meet at the doors outside of the PCCC Gymnasium	S-12 Architectural Walking Tour of Paterson's Downtown Commercial Historic District	AIA, AICP All
3:30 to 4:45 PM -	Choice of Educational Sessions	
Room 206 A&B	S-13 Sustaining Historic Sites Through Leasing and Resident Curatorships	NP, M/C
Room 208 A&B	S-14 A Hard Rain's A-Gonna Fall: Protecting Cultural Assets from Disasters	AIA
Room 211 A	S-15 Historic Preservation in the New Political Climate: Challenges, Opportunities and Responses	AICP, HPC All
Room 210 A&B	S-16 Section 106 Consultation for Indigenous People's Sites in New Jersey	CRM
Room 213 A	S-17 More than the Shore: Fostering Heritage Tourism in NJ	CRM, H, NP, M/C
5:00 to 7:00 PM	Informal Networking Reception hosted by Paterson HPC Hosted by the Paterson Historic Preservation Commission and Paramount Assets, LLC Hamilton and Ward Restaurant, 101 Ward Street Appetizers, Cash Bar, Happy Hour	

Featured Speakers

Lieutenant Governor Sheila Y. Oliver

Sheila Oliver took the oath of office as New Jersey's 2nd Lieutenant Governor on January 16, 2018. She is the first woman of color to serve in statewide elected office in New Jersey history. She was appointed Commissioner of the Department of Community Affairs by Governor Phil Murphy.

Lt. Governor Oliver is a 40-year resident of East Orange, and a native of Newark.

First elected to the General Assembly in 2003, she became Speaker in 2010—the first African-American woman in state history to serve as such, and just the second in the nation's history to lead a state legislative house.

She has chaired the Assembly Human Services Committee, and served on the Labor, Higher Education, Women and Children, Commerce and Economic Development, and Transportation and Independent Authorities committees. She also sat on the Joint Committee on the Public Schools and the Joint Committee on Economic Justice and Equal Employment Opportunity.

She also has served as an Essex County Freeholder, from 1996 to 1999, and was a member of the East Orange Board of Education.

A graduate of Newark's Weequahic High School, she earned a Bachelor's Degree, cum laude in Sociology, from Lincoln University in Pennsylvania. She also holds a Master of Science Degree in Community Organization, Planning and Administration from Columbia University.

Lt. Governor Oliver began her career in public service as the Director of the Office of Youth Services and Special Projects for the City of



Newark, where she focused on preparing young people ages 14 to 21 for post-secondary education and entry into the workforce. She later became the Development Director for The Newark Literacy Campaign while working at Caldwell College as the Coordinator of Career Guidance within the Educational Opportunity Fund Program.

She has taught college courses in Achievement Motivation, Non-Profit Management, and Pre-College Preparation, served as a consultant to a variety of non-profit organizations, and spent several years as the Director of the Essex County Division of Community Action, an anti-poverty initiative.

Lt. Governor Oliver has served on the boards of numerous non-profit organizations, including the East Orange General Hospital Board of Trustees, the United Way, the Newark Coalition for Neighborhoods, the Newark Collaboration Group, the Rutgers-Newark Educational Opportunity Fund Advisory Council, the Global Women's Leadership Collaborative of NJ, the Essex County and East Orange Committees on the Status of Women, Programs for Parents, and a number of other community-based entities. She has held memberships in the Women's Political Caucus of NJ, the NAACP, and the Urban League.

Briann G. Greenfield, Ph.D.,

is Executive Director of the New Jersey Council for the Humanities, a state partner of the National Endowment for the Humanities with a mission of bringing the humanities programming to New Jersey residents. Previously, Briann was Professor of History at Central Connecticut State University where she directed the department's Public History Program that prepares students to work in museums and historic preservation. Briann received her M.A. in Museum Studies and her Ph.D. in American Studies from Brown University. Briann's collections experience



includes serving as a member of the Connecticut Historical Society's Collections Steering Committee and Deaccession Task Force. She is the author of *Out of the Attic: Inventing Antiques in Twentieth-Century New England* (Amherst: University of Massachusetts Press, 2009).

Robert Guarasci

is Founder and Chief Executive Officer of New Jersey Community Development Corporation (NJCDC), whose mission is to create opportunities to transform lives in New Jersey's third largest city, Paterson. Starting with 2 employees in 1994, NJCDC now employs 140 people and has an annual operating budget in excess of \$12 million. NJCDC operates a variety of programs and services that include a preschool for inner-city children, an Innovative Academy high school, AmeriCorps, supportive



housing for people with disabilities and youth aging-out of foster care, job training initiatives, and youth programming. NJCDC has invested over \$70 million in brick and mortar projects throughout its neighborhood, including 150 units of affordable housing. Additionally, Bob and NJCDC founded the Community Charter School of Paterson. Prior to starting NJCDC, Bob served for four years as Executive Assistant to New Jersey's Commissioner of Human Services. He currently serves as a gubernatorial appointee to the Board of Trustees of William Paterson University and the Paterson Housing Authority. Bob has also been appointed by the US Secretary of the Interior to serve on the Paterson Great Falls National Historical Park's Federal Advisory Commission.

Randall Mason

teaches in the Graduate Program in Historic Preservation and is Associate Professor in the Department of City & Regional Planning at the University of Pennsylvania. His courses focus on historic preservation planning, urban conservation, history, and cultural landscape studies. Mason's research interests include theory and methods of preservation planning, cultural policy, the economics of preservation, historic site management, the history and design of memorials, and the history of historic preservation. He leads the Center for Research on Preservation and Society, which undertakes applied research projects on site management and on social, economic and



political aspects of historic preservation. His books include *The Once and Future New York: Historic Preservation and the Modern City* (University of Minnesota Press, 2009) and *Giving Preservation a History: Histories of Historic Preservation in the United States* (edited with Max Page; Routledge, 2004). Mason also worked as Senior Project Specialist at the Getty Conservation and co-founded the nonprofit research group Minerva Partners, which developed projects to strengthen the connections between heritage conservation and social development.

Bernice Radle owns and operates Buffalove Development in Buffalo, NY. Buffalove is a small scale real estate development company focused on bring vacant spaces and places to life in a community conscious way. Her renovation and restoration work has been featured in many local and national news outlets including NY Times, Atlantic Cities, Huffington Post, HGTV and DIY Network. Bernice also is a key leader in the Buffalo's Young Preservationists, is the creator of the "heart bomb" and serves on the Zoning Board of Appeals for the City of Buffalo.



BUILDING A PLACE FOR HISTORY

Sponsors

Opening Reception

Preservation New Jersey

Art Deco

AIA New Jersey

Craftsman

Middlesex County Office of Arts and History

New Jersey Housing and Mortgage Finance Association

(NJ HMFA)

WSA | ModernRuins

Beaux Arts

HMR Architects

Neoclassical

Connolly & Hickey Historical Architects

Michael Calafati Architect, LLC

Passaic County Historical Society

RGA Incorporated

Wu & Associates, Inc.

Victorian

AECOM

Clarke Caton Hintz

Dewberry

Dr. and Mrs. Joseph E. Salvatore

LimeWorks.us

Marvin Windows & Doors

New Jersey Community Development Corporation

Tuckerton Seaport & Baymen's Museum

Gothic

Innerglass Window Systems, LLC

Hunter Research

Mary Delaney Krugman Associates, Inc. (MDKA)

Mills + Schnoering Architects

Preservation Partners

Italianate

Erie Landmark Company

Federal

APA-New Jersey

NJ Council for the Humanities

Paterson Historic Preservation Commission

BUILDING A PLACE FOR HISTORY

Marketplace & Poster Competition

Authors

David Veasey | *New Jersey's Colonial Architecture Told in 100 Buildings and New Jersey Then and Now* | veaseyd@verizon.net

Center for Historic American Building Arts | *This little building is HUGE. The Story of Bridgeton's Nail House* | centerhabarts@gmail.com

Exhibitors

AECOM | 437 High Street, Burlington, NJ 08016 | 609-386-5444 | sophia.jones@aecom.com | aecom-burlington.com

Dewberry | 600 Parsippany Road, Suite 301, Parsippany, NJ 07054 | 973-576-9662 | alubertazzi@dewberry.com | www.dewberry.com

Friends of Historic Flemington | 104 Pine Bank Road, Flemington, NJ 08822 | 908-534-1840 | pfo104@aol.com | FriendsofHistoricFlemington.org

Friends of White Hill Mansion | 3704 Chadbury Road, Mt. Laurel, NJ 08054 | 856-630-9421 | lkelly543@gmail.com | www.whitehillmansion.com

Hanover Township Landmark Commission | PO Box 250, Whippany, NJ 07981 | mikecz@bemorebetterbooks.com | hanovertownship.com

HMR Architects | 821 Alexander Road, Suite 115, Princeton, NJ 08540 | 609-452-1070 | reiss@hmr-architects.com | www.hmr-architects.com

Innerglass Window Systems, LLC | 15 Herman Drive, Simsbury, CT 06070 | 860-651-3951 | Kimber@stormwindows.com | www.stormwindows.com

Lamb Stained Glass Studios | 190 Greenwood Avenue, Midland Park, NJ 07432 | 201-891-8585 | lambstudios@optonline.net | lambstudios.com

League of Historical Societies of New Jersey | 214 N Bridge Street, Somerville, NJ 08876 | 908-240-0488 | barthlinda123@aol.com | lhsnj.org

LimeWorks.us | 3145 State Road, Telford, PA 18969 | 215-536-6706 | robin@craftworktrainingcenter.com | limeworks.us

Mid-Atlantic Regional Center for the Humanities (MARCH) | 429 Cooper Street, Camden, NJ 08102 | 215-925-6919 | cmires@camden.rutgers.edu | march.rutgers.edu

Marvin Windows & Doors | 5 Corporate Drive, Suite 4, Cranbury, NJ 08512 | 609-462-8311 | fwinterle@supermarvin.com | www.superenterprises.com

Middlesex County Office of Arts and History | 1050 River Road, Piscataway, NJ 08854 | 732-745-3030 | mark.nonestied@co.middlesex.nj.us | middlesexcountynj.gov

National Park Service Gateway NRA—Sandy Hook | 26 Hudson Road, Highlands, NJ 07732 | 732-872-5914 | jennifer_cox@nps.gov | nps.gov/gate

New Jersey Historic Preservation Office | PO Box 420, Trenton, NJ 08625 | 609-984-0176 | nj.gov/dep/hpo/

New Jersey Housing and Mortgage Finance Association | 637 S. Clinton Avenue, Trenton, NJ 08611 | 609-278-7519 | abafaloukos@njhmf.a.gov | njhousing.gov

New Jersey State Archives | PO Box 307, Trenton, NJ 08625 | 609-984-3297 | veronica.calder@sos.nj.gov | archives.nj.gov

Passaic County Department of Cultural and Historic Affairs | 199 Totowa Road, Wayne, NJ 07470 | 973-706-6640 | kellyr@passaiccountynj.org | passaiccountynj.org

Passaic County Historical Society | 3 Valley Road, Paterson, NJ 07503 | 973-247-0085 | curator@lambertcastle.org | lambertcastle.org

Preservation New Jersey | PO Box 7815, Trenton, NJ 08628 | 609-583-0881 | cmercer@preservationnj.org | www.preservationnj.org

RGA Incorporated | 259 Prospect Plains Road, Cranbury, NJ 08512 | 609-655-0692 | pgeorge@rgaincorporated.com | rgaincorporated.com

Schnabel Conservation, LLC | 110 Kensington Avenue, Trenton, NJ 08618 | 215-582-3680 | lorraine@schnabelconservation.com | schnabelconservation.com

Tuckerton Seaport & Baymen's Museum | 120 W. Main Street, PO Box 52, Tuckerton, NJ 08050 | 609-296-8868 | brookes@tuckertonseaport.org | tuckertonseaport.org

USCleanBlast.com | 3 Kadel Drive, Mt. Arlington, NJ 07856 | 973-770-9636 x1 | bobbim@uscleanblast.com | www.uscleanblast.com

WSA | ModernRuins | 70 Spruce Street, Paterson Falls, NJ 07501 | 973-977-9097 | jhgotthelf@modernruins.com | www.ModernRuins.com

Wu & Associates, Inc. | 100 Gaither Drive, Suite C, Mount Laurel, NJ 08054 | 856-857-1639 | monica.bayruns@wuassociates.com | wuassociates.com

2018 Student & New Professional Poster Session Participants

Beyond Blueberries: The Life and Work of Elizabeth Coleman White | Allison Pierson, *Executive Director, Whitesbog Preservation Trust* | Albertine Senske, now deceased, was the archivist for Whitesbog Preservation Trust, provided research for this project, and wrote a book on Elizabeth Coleman White that is pending publication this summer.

Boosting the Local Multiplier Effect in Heritage Tourism | Emily Manz, *President, EMI Strategy and CEO and Co-Founder, Have You Met Newark Tours*

Bound Brook and Beyond | Kelsey Brow, *Curator, King Manor Museum*

Documenting Historical Contributions of the Ramapough in Ringwood, New Jersey | Erika Schellinck, *Student, Rutgers University–New Brunswick*

From Mounds to Evergreens and Back Again: Repatriation at the Montclair History Center | Olivia Mercado-Hannon, *Manager of Museum Collections, Montclair History Center*

H. Craig Smith and the Grand Army of the Republic: Looking at History through the Individual | Leanne Manna, *Student, Kean University*

Preservation: Morris County | Erich Huhn, *Graduate Student, Seton Hall University*

Regional Variations in the Manumission of Slaves in New Jersey, 1790–1869 | Guy Weston, *Executive Director, DC CARE and Consultant, Center for African Studies at Rutgers University–New Brunswick*

Ringwood Mines Superfund Site: Contamination & Health | Edwin Gano, *Student, Rutgers University–New Brunswick*

Ringwood Mines Superfund Site: Implications for Local Flora and Fauna | Barbra Walker, *Student, Rutgers University–New Brunswick*

Ringwood Mines Superfund Site: The Story of Contamination and Health | Diana Randjelovic, *Student, Rutgers University–New Brunswick*

The Cultural Landscape of Camp Kilmer on Rutgers Livingston Campus | Kimberly Tryba, *Graduate Student, Rutgers University–New Brunswick and Consultant, Martha Schwartz Partners*

The History of Islam in Newark, New Jersey: Re-imagining Continuities from the Revolutionary Era to the Twentieth Century | Mikal Nash, *Assistant Professor, Essex County College and Graduate Student, Drew University*

Two Churches, One County: Architecture and Orthodoxy in 20th Century New Jersey | Christopher Chasse, *Graduate Student, William Paterson University*



Sessions



BUILDING A PLACE FOR HISTORY

June 7 and June 8

W-1 | Going Dutch: Preservation of a Regional House Type

Location: Meet at the Hamilton Club, 32 Church Street, Paterson beginning at noon for a prompt 12:30 pm departure. | This tour is limited to 30 participants. This field session is a bus and walking tour. Dress for the weather and wear comfortable shoes.

This tour of “Dutch Colonial” houses will give participants an opportunity to see four of the stone walled, gambrel-roofed houses that are typical of a distinctive historic architectural type found in Passaic and Bergen Counties. Properties newly restored and others still in the process of restoration will offer a look at the steps and stages of well-planned projects, including the role of archaeology, in developing interpretation of the sites. Three of the houses have not typically been open to the public in recent years, and this is a rare opportunity to tour all of them with knowledgeable guides. Planned visits include The Van Houten House (1741, c. 1830) in Paterson; the Vanderhoef House (c. 1690, ca. 1830) in Clifton; and the Dey Mansion (1772) in Wayne; and Hester-Schuyler-Colfax House (c. 1694, c. 1783) in Wayne.

TOUR LEADERS:

Janet W. Foster, *Architectural Historian and Preservation Consultant*

Gregory D. Lattanzi, *Ph.D. Curator / State Archaeologist Bureau of Archaeology & Ethnography, New Jersey State Museum.*

Kelly C. Ruffel, *Director, County of Passaic, Department of Cultural & Historic Affairs*

W-2 | Discovery and Alignment: Pathways and Progress in Telling African American History as New Jersey History

Location: Hamilton Club, 32 Church Street, Paterson | Over the course of 2017, a consortium of organizations held three events to explore opportunities and challenges in presenting and discussing African American history. The workshop will present detailed information on planning for and executing these events, and consortium members will describe how their institutions contributed to and benefited from the series. Workshop materials

will be shared and participants will have ample time to raise questions, offer insights from their own experiences, discuss concerns, and offer suggestions.

MODERATOR:

Linda J. Caldwell Epps, *Ph.D., President and CEO, 1804 Consultants*

PRESENTERS:

Heather Brady, *Director of Education and Engagement, Grounds for Sculpture*

Sharon (Elaine) Buck, *Founder and Advisory Board Member, Stoutsburg Sourland African American Museum*

Bruce Daniels, *Director of Facilities, Grounds for Sculpture*

Beverly Mills, *Founder and Advisory Board Member, Stoutsburg Sourland African American Museum*

Samuel A. Stephens, *Ph.D., Trustee, Trent House Association Board*

Opening Plenary Panel—Embracing the Future

Location: PCCC Auditorium | Our world is changing and historic preservation must too. Cultural fragmentation, demographic shifts, economic and political transformation, climate change, and the emergence of digital technologies that affect our relationship to place—all of these realities must be faced if preservation is to embrace its rightful role as a living and vital connection to our past. Join the conversation with our panel of thinkers and doers as we ask: What role can preservation play in enhancing the financial, environmental, social, and cultural well-being of our communities? How can we embrace the past without losing sight of our future?

MODERATOR

Briann G. Greenfield, *Ph.D. Executive Director of the New Jersey Council for the Humanities*

PANELISTS

Robert Guarasci, *Founder and Chief Executive Officer of New Jersey Community Development Corporation*

Randall Mason, *Ph.D, Associate Professor, Historic Preservation, University of Pennsylvania/School of Design*

Bernice Radle, *Owner of Buffalo Development in Buffalo, NY*

BUILDING A PLACE FOR HISTORY

Sessions

S-1 | Creative Saves: More Than One Route to Preservation

Location: Room 206 A&B

Session Sponsor: | **Marvin Windows and Doors**

This session will explore alternative strategies for preserving historic buildings drawing on panelist experiences in three case studies from Passaic, Salem and Monmouth Counties. Each case involves a structure on the National Register that was very close to loss and each case had a unique final disposition.

MODERATOR:

Michael Margulies, *AIA, Principal, Eclectic Architecture*

PRESENTERS:

Brian LoPinto, *President, Friends of Hincliffe Stadium*

Roger Mumford, *Owner, Mumford Homes*

Penelope Watson, *Principal, Watson & Henry Associates*

S-2 | Ready for Redevelopment?

Location: PCCC Auditorium

Session Sponsors: | **Clarke Caton Hintz and Wu & Associates, Inc.**

Drawing from the redevelopment community, our panel of experts will explore the issues, challenges and advantages of re-purposing historic buildings to suit new uses. Using case studies, presenters explore what needs to happen in an urban community to support a preservation project and achieve sustainable, economic success

MODERATOR:

Dorothy P. Guzzo, *Executive Director, New Jersey Historic Trust*

PRESENTERS:

Gianfranco Archimede, *MS, RPA, Director of the Division of Historic Preservation, City of Paterson and Executive Director, Paterson Historic Preservation Commission*

Richard Dunn, *Senior Vice President, Paramount Assets*

John Hatch, *FAIA, Principal, Clarke Caton Hintz*

Bernice Radle, *Owner, Buffalo Development*

S-3 | After the HPC Review: Working Toward More Effective Monitoring and Compliance

Location: Room 211 A

Have you ever driven past a building in your historic district and thought, “Hey, we didn’t approve THAT!” Has your municipality’s Historic Preservation Commission (HPC) reviewed a project pursuant to the local preservation ordinance, only to discover that the project wasn’t built as it was approved, or was built without any approval at all? This session will explore how a municipality can and should address issues of non-compliance with an HPC or planning board determination, violations, and enforcement. A strong relationship and effective communication between the HPC and other municipal officials, including the code or construction officials responsible for enforcement, are critical to the success of the larger municipal land use system.

MODERATOR:

Barton Ross, *AIA, AICP, LEED AP, President, Barton Ross & Partners LLC*

PRESENTERS:

Warren Coupland, *Chairman, Cape May Historic Preservation Commission*

Christopher H. Falcon, *Partner, Maraziti Falcon, LLP*

Kelly Ruffel, *Director, County of Passaic Department of Cultural and Historic Affairs*

S-4 | The Future of Public Commemoration

Location: Room 210 A&B

Session Sponsor: | **Passaic County Historical Society**

Before and after the world-shaking events at Charlottesville during the summer of 2017, intense debate has swirled around the future of monuments and public commemoration strategies in the United States, where audiences in the public square are rapidly diversifying. Join three practitioners and scholars as they reflect on the challenges of representing contested histories in public space, beyond just Civil War statues. From the varied perspectives of architecture, sociology, and public history practice, panelists will reference both local and

global cases to discuss the diversity of approaches we as history professionals can deploy to publicly commemorate broad histories in innovative and inclusive ways.

This session was organized by Izzy Kasdan, Executive Director, Historical Society of Princeton

MODERATOR:

Briann G. Greenfield, *Ph.D., Executive Director, New Jersey Council for the Humanities*

PRESENTERS:

Anita Bakshi, *Professor, Department of Landscape Architecture at Rutgers University affiliated with the Cultural Heritage and Preservation Studies (CHAPS) Program*

Abby Klionsky, *Project Specialist, Office of the Executive Vice President, Princeton University*
Barbara Seater, *Ph.D.*

S-5 | Architectural Walking Tour of Paterson's Downtown Commercial Historic District

Location: Meet at the Registration Area | The walking tour will be offered once in the morning and once in the afternoon (S-12), limited to 40 people for each session. The same information/tour route will be presented each time. Please wear comfortable shoes and dress for the weather during this .2 mile walk.

This walking tour of Paterson's Downtown Commercial Historic District boasts the finest collection of turn-of-the-century commercial architecture in the state, from the late 19th century Beaux Arts through early modern International and Art Deco periods. The tour showcases buildings designed by prominent Paterson architect Fred W. Wentworth, Charles Edwards, Carrere & Hastings and others. Architectural styles, historic context and significance will be covered. Recent restoration projects, preservation challenges and strategic planning will also be observed and discussed.

TOUR LEADERS:

Joshua Castaño, *Senior Program Manager, Partners for Sacred Places, and former historic preservation specialist for City of Paterson*
Richard Polton, *Principal Partner, Value Research Group, LLC*

S-7 | Revenue Streams at Heritage Site: Diversifying for the Future

Location: Room 206 A&B | **Session Sponsor:** | **Tuckerton Seaport & Baymen's Museum**

Most history organizations are looking for dependable, successful and efficient ways to bring in earned income, from admissions and educational programs to rentals and rights and reproductions. This panel discussion, bringing together representatives from different types of organizations, is imagined as an open and friendly exchange about common and uncommon revenue streams—what works, what doesn't, and everything in between, from logistical nightmares to unexpected successes.

MODERATOR:

Evelyn Murphy, *Ph.D., Consultant*

PRESENTERS:

Heather Garside, *Director/Curator, Passaic County Historical Society*

Vonda Givens, *Executive Director, Stickley Museum at Craftsman Farms*

Lynn Laffey, *Assistant Director of Historic Sites, Morris County Parks Commission*

S-8 | Critical Care for Your Building's Envelope: Why It Deteriorates and How to Fix It

Location: Room 208 A&B | **Session Sponsors:** |

Connelly & Hickey Historical Architects

and LimeWorks.us | Building envelopes provide shelter for all activities which occur within. They are made of many different types of materials and vary greatly in size and configuration. But from the moment they are constructed they start to deteriorate. The goal of this session, looking intensely at roofs and facades, is to show how they are constructed, how and why they deteriorate and how to remedy the large variety of problems which occur. Each presenter will explore critical details for performance and longevity.

MODERATOR:

David Abramson, *AIA, Principal, CTS Group Architecture/Planning PA*

PRESENTERS:

Brian Compertore, *RA, LEED AP BD&C, Associate, CTS Group Architecture/Planning PA*

Thomas Connolly, *AIA, Principal Architect, Connolly & Hickey Historical Architects*

Eric Holtermann, *AIA, Principal, HMR Architects*

S-9 | Making Place Queer: LGBTQ History and Preservation

Location: Room 210 A&B

Queer history still remains largely undocumented. As the National Park Service's new LGBTQ Heritage Initiative argues, historians and historic preservationists must "explore how the legacy of lesbian, gay, bisexual, transgender, and queer individuals can be recognized, preserved, and interpreted" especially through place. Session proceeds from two tenets: all history is local and there is no monolithic LGBTQ history. Participants will learn about our use of oral history, interpreting primary sources to bring queer voices to the surface, interrogating the intersections of race, gender, and class on sexuality, and the role of place in understanding queer history. After presentations, questions and group discussion are welcome.

MODERATOR:

Mary Rizzo, *Rutgers University–Newark, QNOHP Advisory Committee*

PRESENTERS:

Lorna Ebner, *M.A. student, Rutgers University–Newark, QNOHP volunteer*
Kristyn Scorsone, *Ph.D. student, Rutgers University–Newark, QNOHP volunteer*
Megan Springate, *Ph.D., Interpretation Coordinator, Cultural Resources Office of Interpretation and Education, Washington Support Office, National Park Service*
Cristina Strasburger, *Department Administrator, History and African American and Africa Studies, Rutgers–University, Newark*

S-10 | Resiliency Planning for Flood Vulnerable Historic Resources

Location: Room 211 A

Session Sponsor: | **AECOM**

This session addresses the impact of climate change and sea level rise on heritage resources and explores methods for addressing flood vulnerability in historic settings and districts. Our panel includes local experts in the fields of policy, preservation, design, and resiliency planning. They will demonstrate what steps are or are not being taken at the state and municipal level to address environmental impacts on historic resources and introduce practitioners of both policy and preservation to insightful approaches to better integrating cultural resource protection in vulnerability planning.

MODERATOR:

Samantha Kuntz, *Preservation Planner, AECOM*

PRESENTERS:

Frank Banisch, *Banisch Associates, and Board Member, Preservation New Jersey*
Emily Paulus Everett, *AICP, Senior Preservation Planner, AECOM*
Jeanne Herb, *Associate Director, Bloustein School of Planning and Public Policy, Environmental Analysis and Communications Group*
David Kutner, *NJPP/AICP, Planning Manager, NJ Future*

S-11 | Interdisciplinary Approaches to Cultural Resource Management (CRM)

Location: Room 213 A

Session Sponsor: | **Dewberry**

By presenting recent case studies, this session will demonstrate how a variety of disciplines benefit historic preservation through Cultural Resource Management. Topics explored will include how state policy has affected municipal historic preservation planning, how advances in archaeology have broadened professionals' view of Native Americans and their landscapes in New Jersey, the importance of public archaeology to a project and overall education, and the practice of preserving, maintaining and presenting material culture in museum and collections.

MODERATORS:

Vincent Maresca, *Senior Historic Preservation Specialist, NJ HPO*

PRESENTERS:

Gregory D. Lattanzi, *Ph.D., Curator and State Archaeologist, New Jersey State Museum*
Wayne T. McCabe, *PP, Principal, McCabe and Associates*
Matthew S. Tomaso, *M.A., RPA, Director, Cultural Resources, PS&S*
Richard F. Veit, *Ph.D., Chair, Department of History and Anthropology, Monmouth University*



S-12 | Architectural Walking Tour of Paterson's Downtown Commercial Historic District

Location: *Meet at the Registration Area* | The walking tour will be offered once in the morning and one in the afternoon, limited to 40 people for each session. The same information/tour route will be presented each time. Please wear comfortable shoes and dress for the weather during this .2 mile walk.

This walking tour of Paterson's Downtown Commercial Historic District boasts the finest collection of turn-of-the-century commercial architecture in the state, from the late 19th century Beaux Arts through early modern International and Art Deco periods. The tour showcases buildings designed by prominent Paterson architect Fred W. Wentworth, Charles Edwards, Carrere & Hastings and others. Architectural styles, historic context and significance will be covered. Recent restoration projects, preservation challenges and strategic planning will also be observed and discussed.

TOUR LEADERS:

Joshua Castaño, *Senior Program Manager, Partners for Sacred Places, and former historic preservation specialist for City of Paterson*

Richard Polton, *Principal Partner, Value Research Group, LLC*



S-13 | Sustaining Historic Sites through Leasing and Resident Curatorships

Location: *Room 206 A&B*

Drawing on the professional experience of the three presenters, this session will examine the resident curatorship program in Delaware, three sustainable case studies in Middlesex County, and efforts on the state level to address sustaining historic resources.

MODERATOR

Cate Litvack, *President, Advocates for New Jersey History*

PRESENTERS

Jim Hall, *Cultural Conservation Program Manager, Delaware Division of Parks and Recreation*

Richard Lear, *Director, Middlesex County Office of Parks and Recreation*

Mark Texel, *Assistant Director of State Park Service*

S-14 | A Hard Rain's a-Gonna Fall: Protecting Cultural Assets from Disasters

Location: Room 208 A&B

Session Sponsor: | **Michael Calafati Architect, LLC**

When disaster looms, the protection of cultural sites depends on emergency managers knowing what and where they are. Using GIS technology, the New Jersey Cultural Alliance (NJCAR) for Response, a network of libraries, museums, historic sites, and similar entities partnering with emergency managers to improve disaster readiness, launched a pilot project to map cultural assets in four Ocean County communities. Now in the proof-of-concept phase, local emergency managers will assess its viability for statewide use. This session will report on progress and discuss the challenges of uniform data gathering for emergency planning and response purposes.

MODERATOR:

Karl Niederer, *NJCAR Administrator; GIS-CAMP Pilot Project Committee Chair*

PRESENTERS:

Kinney Clark, *Senior Historic Preservation Specialist / CLG Coordinator, NJ Historic Preservation Office*

Alexander Elefante, III, *Senior Deputy Emergency Management Coordinator, Burlington City*

Nick Wood, *Museum Curator, Ocean County Cultural & Heritage Commission*

S-15 | Historic Preservation in the New Political Climate: Challenges, Opportunities and Responses

Location: Room 211

Session Sponsor: | **RGA Incorporated**

Since January 2017 the Administration and Congress have implemented a range of initiatives which are intended to reduce the regulatory reach of the Federal Government and facilitate development. Among these have been a series of measures which remove or limit Federal agency responsibilities towards historic properties. The Federal Historic Preservation Tax Credit Program has also been weakened. What is the effect of these changes? What else may be in the pipeline? How do we respond? Do some changes provide opportunities for doing things better?

MODERATOR:

Ian Burrow, *Principal, BurrowIntoHistory LLC.*

PRESENTERS:

Professor David Listokin, *Edward J. Bloustein School of Planning and Public Policy, Rutgers University, New Brunswick, NJ*

Marion Werkheiser, *Cultural Heritage Partners, Washington, D.C.*

S-16 | Section 106 Consultation for Indigenous People's Sites in New Jersey

Location: Room 210 A&B

This session will discuss the involvement of Native American tribes in the consultation process under Section 106 of the National Historic Preservation Act. The panel includes representatives from federally-recognized tribes, state tribes, state agencies, and federal agencies who will discuss tribal involvement in the Section 106 process, using case studies to highlight the ways in which consultation is enhanced by input from both federal and state native peoples.

MODERATOR:

Judith Joan Sullivan, *President and Founder, Ramapough Conservancy, Inc.*

PRESENTERS:

Susan Bachor, *Archaeologist, Delaware Tribe Historic Preservation*

Gregory D. Lattanzi, *New Jersey State Museum*

Chief Vincent Mann, *Turtle Clan, Ramapough Lenape Indian Nation*

S-17 | More than the Shore: Fostering Heritage Tourism in NJ

Location: Room 213 A

Session Sponsor: | **Dr. and Mrs. Joseph E. Salvatore**

New Jersey has often overlooked its colorful history in promoting the state's heritage attractions to outside visitors, yet we offer some of the most unique and significant historic sites of any nearby state. Becoming a heritage tourism destination doesn't just happen overnight. It takes a dedicated team of enlightened partners at both staffed and volunteer led historic sites to make compelling visitor attractions. Representatives from three different counties will highlight their step by step process to capitalize on their history.

MODERATOR AND PRESENTER:

Leslie Bensley, *Executive Director, Morris County Tourism Bureau*

PRESENTERS:

Donna Ann Harris, *Principal, Heritage Consulting Inc.*

Kelly C. Ruffel, *Director, Department of Cultural & Historic Affairs, County of Passaic*





JOURNEY THROUGH Jersey

Passaic County through the Centuries

From the foot of the Great Falls in Paterson to the tip of Bearfort Mountain in West Milford, Passaic County offers a wide array of cultural, historic, and natural attractions. While you're in town for the conference, we hope you take some time to learn about, and experience for yourself, the history of Passaic County and Paterson, New Jersey.

For more information about visiting these and other historic sites throughout the state, be sure to visit www.journeythroughjersey.com an award-winning website dedicated to heritage tourism in the Garden State.



4



1

① Long Pond Ironworks State Park | Witness 120 years of evolving iron making technology at Long Pond Ironworks, founded in 1766 by German ironmaster Peter Hasenclever, who brought 500 ironworkers and their families from Germany to build an ironworks "plantation," including a furnace, forge, houses, shops and farms. The works produced iron for the Continental Army, for the American forces in the War of 1812, and for the Union Army during the Civil War. The remnants of the ironmaking industrial structures still evident at the site date from the 18th and 19th centuries and include furnaces, casting house ruins, charging areas, ice houses, waterwheels, raceways and other structures | [VISITOR INFORMATION: journeythroughjersey.com/sites/long-pond-iron-works](http://www.journeythroughjersey.com/sites/long-pond-iron-works)

② Paterson Great Falls National Historical Park | America's 397th national park is also one of its newest. The park was established in 2009 to protect and interpret the innovative

waterpower system and natural features of the Paterson Great Falls on the Passaic River, which powered America's first planned industrial city. In 1778, Alexander Hamilton visited the falls and was impressed by its potential for industry. Later when Hamilton was the nation's Secretary of the Treasury, he selected the site for industrial city, which he called a "national manufactory." In 1791, Hamilton helped found the Society for the Establishment of Useful Manufactures (S.U.M.), a state-chartered private corporation, to fulfill this vision. The town of Paterson was founded by the society and named after New Jersey governor, William Paterson, in appreciation of his efforts to promote the society. The city grew to be a major industrial center, where Colt weapons, railroad locomotives, and textiles, most notably silk, were produced. The famous Silk Strike of 1913 drew major labor leaders to Paterson and contributed to changes in labor law and practices. | [VISITOR INFORMATION: journeythroughjersey.com/sites/paterson-great-falls-national-park](http://www.journeythroughjersey.com/sites/paterson-great-falls-national-park)



③ New Jersey Botanical Gardens | Skylands Manor | Situated in Ringwood State Park, the New Jersey Botanical Gardens includes 96 acres of specialty gardens surrounded by 1,000 acres of woodlands with extensive views of the Ramapo Mountains, and the mansion—Skylands Manor. The gardens contain a far-reaching variety of plants, evergreens, deciduous trees, shrubs, and more. Of particular interest are the crabapple vista, terraced gardens, perennial and annual gardens, and woodland paths. Designed by John Russell Pope for Clarence McKensie Lewis, a stockbroker and civil engineer, the Skylands Manor resembles a Jacobean estate located in the English countryside some 400 years ago. Built in the 1920s, this 44-room mansion was constructed of native stone and half-timbers, and blends into the landscape. | **VISITOR INFORMATION:** journeythroughjersey.com/sites/nj-botanical-gardens-skylands-manor

④ American Labor Museum | The Botto House | The American Labor Museum is located in the Botto House, a National Historic Landmark in Haledon, NJ. Just miles from the Great Falls, it is where strikers from the silk mills congregated and rallied after being forced out of Paterson. The owners of the house, Maria and Pietro Botto, had immigrated to the United States from Italy and found work in the silk industry in Paterson. During the 1913 Paterson Silk Strike, they offered their home as a gathering place for the 15,000+ strikers to hear rousing speeches by leaders of the Industrial Workers of the World. The strike was turning point in U. S. labor history. The museum advances the public understanding of the history of work, workers and the labor movement throughout the world, with special attention to the ethnicity and immigrant experience of American workers. It is the first Italian American site to be designated as a National Historic Landmark. | **VISITOR INFORMATION:** journeythroughjersey.com/sites/labormuseum



Speakers

BUILDING A PLACE FOR HISTORY

Speakers

David Abramson, AIA, is a Principal at The CTS Group Architecture/Planning in Chatham, NJ. He received a Bachelor of Architecture at the University of Illinois and a Master of Science in Historic Preservation from Columbia University. Since 1976 he has been a member of The New Jersey State Review Board for Historic Sites and for 20 years served on the Newark's Landmarks and Preservation Commission, nine of them as Chairperson. He has devoted his career to restoration and historic preservation on a wide variety of projects which included detailed conditions assessments as well as restoration construction.

Gianfranco Archimede, MS, RPA, has served for the past ten years as Director of the Division of Historic Preservation for the City of Paterson and Executive Director of Paterson's Historic Preservation Commission. He provides programmatic guidance to the city on preservation planning and cultural resources, oversight of Paterson's public preservation projects, and regulatory permitting review for hundreds of large and small scale construction projects within Paterson's three national, state and local historic districts. He administers the Paterson HPC legacy programs for public awareness and education, which was honored in 2015 with a NJ Historic Preservation Award for Outstanding Achievement.

Anita Bakshi is the author of *Topographies of Memories: A New Poetics of Commemoration* (2017). She teaches in the Department of Landscape Architecture at Rutgers University and is affiliated with the Cultural Heritage and Preservation Studies (CHAPS) Program. Following several years in architectural practice in Chicago, California and Istanbul, she received her PhD in the History and Theory of Architecture from Cambridge University with the Conflict in Cities Research Programme.



Frank Banisch, President of Banisch Associates, Inc., has been a community planning and design consultant serving New Jersey municipalities since 1972. Mr. Banisch brings to the planning profession an architecture and design orientation and has focused his career in the areas of urban design, historic preservation and environmentally sound land management. Serving municipal and private clients across the State, he has prepared resource management tools to protect the State's diverse natural and cultural resources and to shape development to promote land use compatibility and enhance the quality of life.

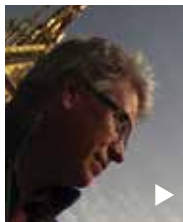
Leslie Bensley is Executive Director of the Morris County Tourism Bureau and has been a stalwart supporter of the county's illustrious heritage and culture for the past 20 years. The Bureau is non-profit Destination Marketing Organization that positively affects the economy of Morris County by promoting the area's exceptional historic, cultural and recreational opportunities by providing services to residents, business travelers and tourists. In 2013 Ms. Bensley received an award for recognition from the New Jersey Historical Commission for her contributions to upholding and promoting the history of NJ.

Heather Brady has been actively involved in the fields of art and museum education for over 15 years. In 2015, she joined Grounds For Sculpture as its first ever Director of Education and Engagement. In this role, she oversees a diverse mix of education, performing arts, and community programs. Previously Ms. Brady served as Head of Education for seven years at the Noguchi Museum. There, she developed programs to support visitors of every age and ability, shaping the vision for all on- and off-site education offerings, including guided tours, hands-on workshops, and experiences designed specifically around the museum's permanent collection, temporary exhibitions, and garden space.

Sharon Elaine Buck is a founder the Stoutsburg Sourland African American Museum and a member on the Advisory Board. Ms. Buck is also a 30-year Trustee of the Stoutsburg Cemetery Association, a historic cemetery for people of African descent and located in Hopewell. Along with her research partner, Beverly Mills, she co-authored *If These Stones Could Talk* about the contribution of African Americans who lived in the Sourland Mountain region. She is a co-founder of Friday Truehart Consultants which is a consulting company that works closely with K-12 educators from various school systems who are interested in including African American history in their lesson plans and curriculum.

Ian Burrow has been an archaeological and cultural resource management professional since 1975, first in England and, since 1988, in the United States. In 2015 he founded BurrowIntoHistory, LLC, whose mission is to improve the preservation, management, and public enjoyment of historic cultural resources in the U.S. and beyond. For the previous 27 years he worked as Vice President and Principal Archaeologist at Hunter Research, Inc., a well-respected cultural resource management company based in Trenton. He was the 2015 recipient of the NJ Historical Commission's Richard J. Hughes Award for Distinguished Contributions to Public Knowledge and Preservation of New Jersey History.

Linda J. Caldwell Epps, Ph.D, is President and CEO of 1804 Consultants. She brings to clients more than 40 years of experience working with educational and cultural institutions, including The NJ Historical Society, NJ Network Television and Radio and Bloomfield College. She serves on various boards including the James Brown African American Room at the Newark Public Library, NJ Performing Arts Center, Brick City Development Board, Newark History Society, Historical Society of Elizabeth, the NJ History Advocates, The Jewish Museum of NJ, Newark Archives Board, the Timbucto NJ Advisory Council, and Board of Deacons of Bethany Baptist Church of Newark.



Joshua Castaño is a Senior Program Manager at Partners for Sacred Places where he provides training, technical assistance, and consulting services to historic sacred places and communities across the nation. Most of his time is spent working closely to develop community-based planning initiatives with historic sacred places, in addition to fundraising strategy. Among the many other projects he manages, Joshua is the lead for ongoing engagement projects with support from the National Heritage Areas Development Partnership. Mr. Castaño began his career in his hometown of Paterson as an historic preservation specialist for the Department of Community Development.

Kinney Clark is the Technical Director of NJCAR's GIS-CAMP pilot and is a GIS Specialist with the NJ State Historic Preservation Office, coordinating cultural resources GIS development and other information management initiatives for cultural resources related data. He has been extensively involved in HPO's response to Superstorm Sandy across a variety of program areas. In addition, he administers HPO's annual federal funding process, and participates in project development and data coordination for New Jersey's Certified Local Government sub-grant program. Mr. Clark previously worked with the HPO's Transportation Unit, providing historic preservation review and technical assistance under a variety of federal and state programs.

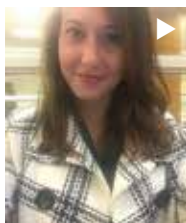
Brian P. Compertore is an Associate at the CTS Group Architecture/Planning in Chatham, NJ. Since graduating from the New Jersey Institute of Technology in 2006, he has worked on numerous adaptive reuse, restoration, preservation, and façade maintenance projects in New York and New Jersey. Mr. Compertore was the project manager for all CTS's award-winning projects in Historic Restoration and Adaptive Reuse including The Restoration and Adaptive Reuse of The Rogers Locomotive Works Storage Building, Recreation of the Music Court Pavilions, Façade Restoration of 93 Reade Street, and the Façade Restoration of 202 5th Ave.

Thomas B. Connolly, AIA, is the Principal Architect for Connolly & Hickey Historical Architects, located in Cranford. Connolly & Hickey is an architecture and historic preservation firm specializing in the restoration, rehabilitation, and adaptive use of a variety of historic resources. Tom provides project management, coordination, and direct client contact. He is also responsible for documentation of existing conditions, schematic design, design development studies, contract document preparation including drawings and specifications, cost estimates, contractor prequalification, bidding, and contract administration services.

Warren Coupland is the Chairman of the Cape May Historic Preservation Commission. He joined the Commission in 2006 and has held the position of Chair since 2011. After a successful business career, Mr. Coupland and his wife Janet retired to Cape May where he, as a licensed contractor, restored their 1895 Carpenter's Gothic Victorian home into a showcase property and contributed to the renovation of a number of additional Victorian era homes.

Bruce Daniels has been the Facilities Director and Project Manager at Grounds For Sculpture (GFS) for over 30 years. He was involved in the initial planning of the park, responsible for all of its building and landscape construction, supervises its daily operations. Daniels is also the Vice President of the Stoutsburg Sourland African American Museum, acting as the liaison between the two groups and helping to expand GFS's audience and programming.

Richard Dunn, Senior Vice President at Paramount Assets, possesses more than three decades of experience in residential and commercial property management and construction. At Paramount, he is involved with all facets of the company's real estate operations, including strategic planning, emergency management operations, and property acquisitions and dispositions, and handles governmental and municipal relationships. Mr. Dunn is a Registered Apartment Manager with the National Association of Home Builders, Associated Builders and Owners of Greater New York, and is NJ State Certified in incident command systems.



Lorna Ebner is completing a Master's degree in History at Rutgers University-Newark, where she is interested in the social history of disease. She has worked with the Queer Newark Oral History Project for two years. She has conducted interviews and helped develop a walking tour based on the project.

Alexander J. Elefante III is a sworn emergency management professional with ten years of front line experience. He serves as the Senior Deputy Coordinator for the City of Burlington Office of Emergency Management. He affiliates with Intelligence Centers and regularly attends the NJ Regional Intelligence Academy. He consults and instructs government, faith-based, educational, public and private organizations on hazard mitigation, hostile event prevention, emergency preparedness, incident response and disaster recovery.

Emily Paulus Everett manages the Preservation Planning team at AECOM's Historic Preservation Group. She has over 18 years of experience in historic preservation and community planning in the public and private sectors. Ms. Everett has authored National Register nominations and conducted cultural resource surveys, rehabilitation tax credit reviews, and Section 106 reviews. Her public-sector work focused on applying preservation tools to local resources. More recently, she served as Principal Investigator and Team Leader on numerous historic preservation studies, including two innovative flood vulnerability assessments of historic resources in Pennsylvania.

Christopher H. Falcon has over 35 years of experience representing both public and private sector clients and has served as general and special counsel to various municipalities, boards and authorities. His areas of emphasis for public sector clients include the general representation of governing bodies, land use, planning, condemnation, infrastructure, financing and litigation. Mr. Falcon's areas of emphasis for private sector clients include transactional services, obtaining environmental clearances, real estate development, zoning approvals, and financing.



Janet W. Foster is an architectural historian and historic preservation consultant, as well as a proponent of New Jersey and its vernacular architecture. She teaches and writes on the topic, and is an adjunct faculty member in the Columbia University Historic Preservation Program. She serves on the Madison Borough Historic Preservation Commission, and on the Trustees of the Hartley Dodge Memorial. Ms. Foster was elected Chair in 2016 after serving two years as Vice Chair, and also serves on the Grants and Loans, Education and Outreach, and Legislation and Policy Committees.

Heather Garside is Director/Curator of the Passaic County Historical Society. She has been with the Society since October 2011, when she moved to New Jersey from Schenectady, New York, having formerly worked for the Schenectady County Historical Society. In her position as Director, Ms. Garside oversees all activities at the Lambert Castle museum and library/archives, including programming, and special events. In her capacity as Curator, she is responsible for all exhibitions and collections management. She received her B.A. in History at Union College, NY and her M.A. in Medieval Archaeology at the University of York, UK.

Vonda Givens has served as the Executive Director of the Stickley Museum at Craftsman Farms, a National Historic Landmark in Parsippany, New Jersey, since 2014. Ms. Givens joined the Stickley Museum's staff as the Education Director in 2008 and launched its current comprehensive educational program. A museum educator for 15 years, she has an M.A. from Texas A & M University and a B.A. from Lipscomb University. She is a proud Tennessee native, who has called New Jersey home since 2001.

Dorothy P. Guzzo currently serves as the Executive Director for the New Jersey Historic Trust. The Trust provides matching grants for capital preservation projects and funds heritage tourism initiatives. Prior to the Trust, Ms. Guzzo served as the NJ Deputy State Historic Preservation Officer. She was a member of the NJ Heritage Tourism Taskforce, founding member of the Crossroads of the American Revolution Association, served ex officio to the NJ Historical Commission and Main Street NJ Advisory Committee and is the former Chair of the Alice Paul Institute. She has held elected office and served on a local planning board and preservation commission.



Jim Hall has been the Chief of Cultural Resources for Delaware State Parks for the last 8 years. Managing Delaware's Resident Curatorship program is one of many job responsibilities in the position including oversight of other Department of Natural Resources and Environmental Control historic preservation initiatives, Section 106 compliance, an active "Time Travelers" public archeology program, and serving as the statewide Historic Weapons/Black Powder Safety officer for parks programming. A Pennsylvania native, Jim graduated with a degree in History & Political Science from Penn State's Behrend campus in Erie. His wife Katie is the Historic Markers Coordinator for Delaware Public Archives.

Donna Ann Harris is the principal of Heritage Consulting Inc. a Philadelphia-based Women's Business Enterprise boutique consulting firm that aids non-profit organizations and government agencies nationwide in the following practice areas: downtown and commercial district revitalization, historic preservation, tourism product development, and non-profit organizational development. For the past 14 years Ms. Harris has been speaking about and consulting with historic house museums around the country about alternative uses and stewardship responsibilities. Preparing heritage tourism assessments and audience research studies have been a major focus of her practice for the last five years.

John Hatch, AIA, is a partner with Clarke Caton Hintz (CCH), a Trenton-based architecture and planning firm, as well as with HHG Development, which focuses on redevelopment. At CCH, Mr. Hatch has managed the design of an array of historically significant buildings: Morven in Princeton, the Roebling Complex, and the Hunterdon County Courthouse. He has also designed a wide range of award-winning projects, major mixed-use development projects, urban redevelopment plans and projects, and numerous commercial and civic buildings and facilities. His work with HHG includes the Cracker Factory Redevelopment and, most recently, Roebling Lofts and Roebling Center. All of Mr. Hatch's projects address issues of context, civic life and sustainability.

Jeanne Herb of the Rutgers University Bloustein School works to advance sound environmental, sustainability, and health in all policies practices at the state, local and regional levels. Jeanne co-facilitates the NJ Climate Adaptation Alliance, a network of organizations focused on advancing climate change and resilience policies and practices. She serves as the Co-Lead for stakeholder engagement of the Rutgers Coastal Climate Risk and Resilience Training Program and she is part of a team of practitioners and researchers that have integrated science into decision support tools to support resilience planning.

Eric Holtermann, AIA is a principal at HMR Architects in Princeton. He has worked on both new and historic projects throughout his career, with a particular interest in the appropriate use of old buildings and sensitive integration of new design within historic contexts. Recent projects include the Farmhouse at Howell Living History Farm, Loew's Jersey Theatre in Jersey City, and new housing at the Institute for Advanced Study in Princeton. A resident of Pennington since 1999, Mr. Holtermann worked closely with the Borough Council in 2011 to draft a Master Plan Element and subsequent Historic Preservation Ordinance. He is currently chair of the Pennington Historic Preservation Commission.

Izzy Kasdin has been the Historical Society of Princeton's Executive Director since 2016, previously serving as its Curator of Collections and Exhibitions. As the architect and executor of the Society's strategic plan and long-range vision, Ms. Kasdin is passionate about invigorating its activities and programs to push the boundaries of the traditional history museum model. Her museum commentary has been published in *Exhibition*, the journal of the National Association for Museum Exhibition. She has also worked for the Ford's Theatre Society in Washington, D.C. and the Cambridge Museum of Archaeology and Anthropology.



Abby Klionsky is a public history practitioner who has worked in a variety of positions at the cross-section of material culture, history education, and archives. At Princeton University, she's working to implement a public history initiative aimed at diversifying the art and iconography of the campus by telling some of the lesser-known stories and "hidden histories" of the institution. She is building a series of themed historical tours and incorporating those stories into the overall student and visitor experience. Ms. Klionsky previously worked on digital humanities initiatives in Chicago, and worked with schools across the American South.

Samantha Kuntz is an Architectural Historian for AECOM Technical Services, Inc. She began her career with AECOM working on the Disaster Planning for Historic Properties Initiative in Monroe and Philadelphia counties. Her previous planning and preservation experience includes working for the Philadelphia City Planning Commission, the New Jersey State Historic Preservation Office, and PennPraxis. Ms. Kuntz earned an M.S. in Historic Preservation and a M.A. in City and Regional Planning from the University of Pennsylvania School of Design.

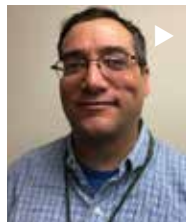
David M. Kutner, NJPP/AICP manages New Jersey Future's planning initiatives and is responsible for the organization's outreach and assistance to municipalities, with a special focus on coastal communities vulnerable to sea-level rise. In managing the Local Recovery Planning Manager program, he provides ongoing and direct assistance to municipalities seeking to rebuild after Hurricane Sandy. His work has focused on helping communities recover from but also encouraging them to consider the implications of projected sea-level rise and how they might plan for and respond to the challenges of impending flood inundation risks due to a changing climate.

Lynn Laffey has served as the Assistant Director of Historic Sites at the Morris County Park Commission since 2012. She oversees all activities with the Park Commission's four designated historic sites: Fosterfields Living Historical Farm, Historic Speedwell, Cooper Gristmill and Mt. Hope Miners Church. A museum professional for more than 20 years, Ms. Laffey has an M.A. from the State University of New York at Albany and a B.A. from the University of Delaware.

Gregory Lattanzi Ph.D. is Curator/State Archaeologist for the Bureau of Archaeology & Ethnography at the New Jersey State Museum. Dr. Lattanzi was previously employed at a number of contract archaeological firms in the northeast participating in excavations in New Jersey, New York, and Pennsylvania. He has published a number of articles, book reviews, and given public presentations. His current research includes the role of copper during the Early to Middle Woodland periods and Middle Woodland Abbott zoned ceramics and their implications on social organization in the Middle Atlantic region.

Rick Lear is Director of the Middlesex County Office of Parks and Recreation. He is responsible for the management of over 11,000 acres of Middlesex County Park System including 18 parks and recreation facilities and 8,000 acres of conservation areas and preserves that include over 30 miles of marked and maintained trails. The Office of Parks and Recreation is also home to the award-winning Plays-in-the-Park program that has brought Broadway-caliber musical theater to Middlesex County for 56 years.

David Listokin is a Professor at the Center for Urban Policy Research of Rutgers University and a leading authority on public finance, development impact analysis, and historic preservation. Dr. Listokin has recently been analyzing strategies to quantify the economic benefits of historic preservation, research sponsored by the National Park Service, state governments, and the National Trust for Historic Preservation. He has written and edited 25 books, including *The Subdivision and Site Plan Handbook*, *Development Impact Assessment*, *The Fiscal Impact Handbook*, *Living Cities*, *Landmarks Preservation and the Property Tax*, and *Mortgage Lending and Race*.



Cate Litvack is currently president of the Advocates for New Jersey History and a vice-president of the board of trustees of the Old Barracks Museum. She served from 2005–2013 as the first executive director of the Crossroads of the American Revolution Association, whose role is also to raise popular appreciation of the historical significance of the Heritage Area that was designated in 2006. Ms. Litvack, the former mayor of Princeton Township, has been an active land preservationist chairman and long-time trustee of the D&R Greenway Land Trust.

Brian LoPinto was born in Paterson and raised two blocks away from Hinchliffe Stadium. Knowing that the cavernous structure could not have been constructed only for high school athletics, in 1997, when Paterson Public Schools closed the stadium, he contacted the National Baseball Hall of Fame. Their response: “The Hall of Fame certainly recognizes the significance of Hinchliffe Stadium and it is represented in our Library’s research collections.” That statement helped encourage Mr. LoPinto to embark on his own independent research of Hinchliffe Stadium and to form the Friends of Hinchliffe Stadium.

Chief Vincent Mann is chief of the Turtle Clan of the Ramapough Lenape Indian Nation. He recently won the Russ Berrie Award for his work on preservation of land issues in the Ramapo Mountains.

Vincent Maresca III is a Senior Historic Preservation Specialist with the NJ State Historic Preservation Office, where he has been since 2007. Among his responsibilities are project reviews under the NJ Register of Historic Places Act, Section 106 of the National Historic Preservation Act, Land Use Regulatory Program permitting, and Executive Order 215. He monitors NJ SHPO’s easements, developed NJ SHPO archaeological GIS database, NJ SHPO representative for the D&R Canal Commission, NJ SHPO representatives for the Division of Natural and Historic Resources’ Land Management review program, and below ground reviewer for multiple federal agencies.

Michael Margulies, a principal and co-founder of Eclectic Architecture, LLC, has over two decades of experience in architecture, historic preservation and traditional trades. His extensive involvement with design, architectural conservation, consultation, grant writing and public speaking is complemented by his field experience which focused on carpentry and timber framing. He has presented at the Drew University Historic Preservation Certificate Program and the Mr. Margulies is a founding member and President of the Pohatcong History & Heritage Society and also sits on the Pohatcong Township Historic Preservation Commission and Board of Directors of Preservation New Jersey.

Wayne McCabe's career spans almost 50 years with the Delaware County (NY) Planning Board, the Department of Community Affairs, the Plainfield City Planning Department and the Sussex County Planning Department. He founded his consulting firm specializing in planning and historic preservation in 1980. Mr. McCabe presently works at Waterloo Village for the State Division of Parks and Forestry, has served as the official Historian of Sussex County since 2004 and is in his fifth year as President of the Sussex County Historical Society. He has also served as a consultant to 18 municipal historic preservation commissions.

Beverly Mills is a retiree as the Director for the Workforce Development Board in Mercer County, NJ. She is a founder of the Stoutsburg Sourland African American Museum, a member of its Advisory Board and a 35-year Trustee of the Stoutsburg Cemetery Association. Ms. Mills co-authored a book entitled *If These Stones Could Talk* on the contribution of the African American population who lived in the Sourland Mountain region. It was through this research that Beverly has been able to trace her ancestry to African Americans who were enslaved in the Hopewell Township area prior to the Revolutionary War.



Roger Mumford is President of Roger Mumford Homes LLC, a Red Bank NJ based home building company that is involved with a wide array of projects including single family home communities in NJ and NY, rental communities, affordable housing and specialty projects such as the T. Thomas Fortune effort in Red Bank, NJ. Mr. Mumford was previously cofounder and President of the Matzel and Mumford Organization, a firm that built over 3,500 homes in NJ before being acquired by a public home builder.

Evelyn C. Murphy, Ph.D. is an economist and nonprofit consultant. She works to use economics, finance, and business principles to help nonprofits articulate and achieve their missions. Three decades of experience in business, government and the nonprofit sector give her a unique perspective which she uses to assist with project management, board development, executive transition, market research, strategic planning, and fundraising strategy. Dr. Murphy served for four years as Director of the Monmouth County Historical Association and led the organization in a refocusing of strategic mission, outreach to underserved communities and a steady and deliberate diversification of revenue streams.

Karl Niederer has served New Jersey in various leadership capacities for over 38 years. From 1978 to 2012 he was director, state archivist, and chief records administrator in the former state Division of Archives and Records Management and contributed to the protection and preservation of essential records of government, and the institutions and agencies that maintained them. In 2010-11, he participated in a nationwide disaster preparedness and recovery webinar training program sponsored by FEMA and the Council of State Archivists. Mr. Niederer currently serves as Administrator of NJCAR and chairs its GIS-CAMP pilot project committee.

Richard Polton has an active practice in real estate consulting and specializes in planning issues, urban history, urban redevelopment, affordable housing, residential feasibility and marketability analysis. He is a principal in Value Research Group, LLC, a leading real estate valuation firms. Mr. Polton is the developer and owner of the recently completed forty unit, mixed income, mixed use project known as the Montclaron II in Montclair. He has a love of urban and architectural history and is the author of *The Life and Times of Fred Wesley Wentworth: The Architect Who Shaped Paterson, NJ and Its People* (2012, distributed by Rutgers University Press).

Mary Rizzo is Associate Director of Public and Digital Humanities Initiatives for the Graduate Program in American Studies and Assistant Professor of Professional Practice in History at Rutgers University-Newark. She is an Advisory Committee member for the Queer Newark Oral History Project. With a group of students and community partners, she curated the exhibit, *At Home in Newark: Stories from the Queer Newark Oral History Project*.

Barton Ross, AIA, AICP, LEED AP, President of Barton Ross & Partners, LLC, is an architect who has contributed to master plans for the Virginia State Capitol, the United States Capitol and Princeton University. He has worked on numerous landmark buildings including the Corbin Building in New York, the Surf Club in Miami and the Shady Rest Golf & Country Club in Scotch Plains. Currently, Mr. Ross is the historic preservation consultant for Millburn and Plainfield and serves on the Board of Directors for Preservation New Jersey.

Kelly C. Ruffel is the Director of the Department of Cultural and Historic Affairs for the County of Passaic. She oversees all of the County's historic assets through the administration of preservation grants, implementation of cultural and history programming, and management of restoration and rehabilitation projects. She previously served as the Historic Preservation Specialist for the City of Paterson for four years, assisting in public preservation projects and regulatory permitting review and continues to serve as a commissioner on the City of Paterson Historic Preservation Commission.



Kristyn Scorsone is a student in the Ph.D. program in American Studies at Rutgers University-Newark. She has been with the Queer Newark Oral History Project for three years conducting oral histories and researching Newark's LGBTQ past. She is now at the helm to create and launch a Queer Newark podcast.

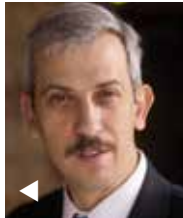
Barbara Seater has taught for more than 40 years at Raritan Valley Community College in the Department of Humanities and Social Sciences. She twice received Mid-Career Fellowships at Princeton University. Her approach to teaching sociology, particularly in the areas of race and ethnic relations, has been to focus on history, law, and public policy. Megan Springate works in the National Park Service Cultural Resources Office of Interpretation and Education in Washington, D.C. She serves as Interpretation Coordinator for the office, as well as coordinating the NPS 19th Amendment Centennial Commemoration, which is coming up in 2020. She received her Ph.D in anthropology from the University of Maryland in 2017.

Sam Stephens is a Trustee of the Trent House Association Board, which works with City of Trenton to maintain the 1719 William Trent House Museum and provide programming related to the history of the House. With a background in sociology, Mr. Stephens has led the Trent House Association's work on expanding its research into and deepening its interpretation of slavery at the Museum.

Christina Strasburger is department administrator for History and African American and African Studies at Rutgers University-Newark. She has worked with the Queer Newark Oral History Project since its founding in 2011.

Judith Joan Sullivan is a lawyer and president of a volunteer organization called Ramapough Conservancy, Inc. Ramapough Conservancy preserves land, renovates historic structures and helps the community in connection with any issue regarding the land. Her charity has discovered 23 new archaeological sites in the past four years in the Ramapo Mountains through her work in preservation.

Mark Texel is former Director of the NJ Division of Parks and Forestry where he oversaw all activities within the State's 39 parks, 57 historic sites, 11 state forests, and 3 marinas encompassing over 450,000 acres of preserved park lands. He now serves as Assistant Director of State Park Service. He previously served as Director of the Historic Sites Division for the Morris County Park Commission. In addition to bachelor's degrees in American history and music, Texel is a graduate of the Turley Forge Blacksmithing School, the Winedale Seminar on Interpretation of the Humanities in Museums and Drew University's Certificate in Historic Preservation program.



Matthew S. Tomaso, M.A., RPA has a career that has straddled applied and academic aspects of archaeology. In 1997, Tomaso start an interdisciplinary program focused on archaeology and cultural resource management at Montclair State University.. Over his 30 years in CRM and the academic world, Mr. Tomaso has published and presented dozens of peer-reviewed scholarly articles, conference presentations and sessions ranging from the history of archaeological theory to analyses of prehistoric stone tools and the geomorphology of archaeological sites to the social history and archaeology of the "deserted village" of Feltville in Union County's Watchung Reservation.

Richard Veit, Ph.D. is Professor of Anthropology and Chair of the Department of History and Anthropology at Monmouth University. His research focuses on the Middle Atlantic Region between the late 17th and early 19th centuries, and his work focuses on commemoration, symbolism, vernacular architecture, and military sites archaeology. He has authored or co-authored numerous articles and reviews and eight books including *Digging New Jersey's Past: Historical Archaeology in the Garden State* (Rutgers Press 2002). In 2007, Dr. Veit was the recipient of Monmouth University's distinguished teacher award.

Penelope Watson, AIA is a Principal at Watson & Henry Associates, an architectural and engineering firm specializing in historic preservation for non-profits and public entities. Over 35 years, her experience has included investigation of historic interiors, interior finishes and exterior materials; historical documentary research; architectural design, including barrier-free access, project management, and National Register and National Historic Landmark nominations. She is Chair of the Greenwich Township Planning and Zoning Board, a board member for Preservation New Jersey and the US Life-Saving Service Heritage Association.

Marion Werkheiser is the co-founder and chief executive of Cultural Heritage Partners, a government affairs, strategy, and law firm focused on the intersections between development and preservation. She advocates for increased support for the national historic preservation program at the federal level, helps clients navigate the Section 106 process at the project level, and advises project proponents, tribes, and consulting parties to achieve creative, win-win outcomes that balance preservation values and development. Marion earned her J.D. from Harvard Law School and is licensed to practice in Virginia, California, and the District of Columbia.

Nicholas Wood is a Museum Curator for the Ocean County Cultural and Heritage Commission. He is responsible for administering the regrant programs, collections management, assisting with the Teen Arts Festival and other programs, and providing direct technical assistance to area nonprofits. A graduate of the University of Maine and the Cooperstown Graduate Program, Mr. Wood currently serves as the president of the NJ Association of Museums. He and Timothy Hart, Director of the Commission, have been Ocean County's lead partners in the NJCAR GIS Cultural Assets Mapping Program pilot project.



Sponsors

Great Strides at Great Falls, Paterson.

WSA | MODERNRUINS
GREAT FALLS INDUSTRIAL PARK
COLLABORATE IN CREATIVELY RE-VISIONING THE HISTORIC DOLPHIN JUTE MILLS.



www.ModernRuins.com

Preservation with Passion®



Middlesex County is the intersection where diverse history meets leading-edge innovation and outstanding arts programs meet a vibrant culture.

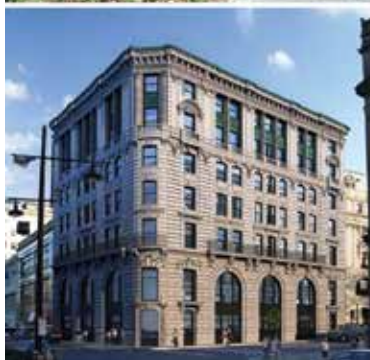
This intersection makes Middlesex County an extraordinarily rich place to live, work and visit. The Board of Chosen Freeholders is committed to continually strengthen and grow the County's many Arts & History programs and initiatives.

Text "CULTURE" to 56512 to turn your visit to Middlesex County into an experience of a lifetime.

Middlesex County Board of Chosen Freeholders
Ronald G. Rios, Director
Charles E. Tomaro, Deputy Director
Kenneth Armwood, Charles Kenny, Leslie Koppel, Shanti Narra, and Blanquita B. Valenti

MIDDLESEX
COUNTY • NJ

www.middlesexcountynj.gov



CTS GROUP

Architecture / Planning / Preservation

17 Commerce Street
Chatham, NJ 07928-2703
(973) 635-5900 tel
www.ctsarch.com

KAPLAN
GAUNT
DESANTIS

ARCHITECTS

KGDarch.com

OVER 45 YEARS OF
AWARD WINNING
HISTORIC
PRESERVATION
EXPERIENCE

RGA

SERVICES

HISTORICAL RESEARCH
HABS/HAER SERVICES
HISTORIC PRESERVATION PLANNING
HISTORIC ARCHITECTURAL SURVEYS
PHASE I, II, AND III ARCHAEOLOGICAL SURVEYS
NATIONAL AND STATE REGISTER OF HISTORIC PLACES NOMINATIONS
EXHIBITS, EXHIBITION PLANNING AND HISTORIC INTERPRETATION

259 Prospect Plains Road, Building D
Cranbury, NJ 08512
Tel: 609-655-0692
www.rgaincorporated.com



Producing, preserving, providing
housing that New Jersey
residents can afford...



The historic Hahne & Co. building has once again assumed its place as an architectural landmark in downtown Newark. Through Agency funding, this development was transformed into a mixed-use complex that provides homes to residents of varying income levels.

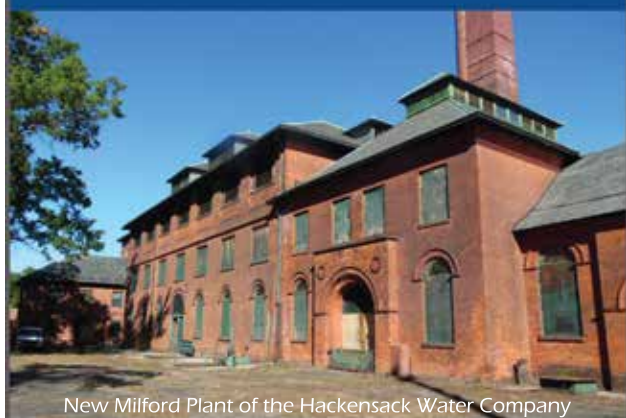


NJHMFA is a leader in the creation and rehabilitation of nearly 100,000 affordable housing opportunities for families, seniors, and special needs residents statewide through its expert financing options.

Learn how NJHMFA can help fund your next development,
call 609-278-7518 or visit us at njhousing.gov.



www.wuassociates.com
info@wuassociates.com | (856) 857-1639



New Milford Plant of the Hackensack Water Company

Discover

PASSAIC COUNTY HISTORICAL SOCIETY

Museum • Library • Archives

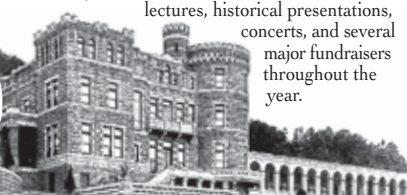
at
LAMBERT CASTLE

The Passaic County Historical Society is a private non-profit educational organization founded in 1926 and dedicated to the cultivation of interest in the history and culture of Passaic County. The Society's home in Lambert Castle, a nineteenth-century mansion built in 1892 by silk magnate Catholina Lambert. The Castle is owned by the County of Passaic and has been the home to the Society since 1934.

The museum's exhibits and furnishings reflect the local history of Passaic County through the curation of our large and ever-expanding collection of artifacts, archives, and records. Visitors experience a self-guided tour through the museum's period rooms and historical exhibits.

The Society operates a library and archives, where scholarly researchers, genealogists, and historical enthusiasts will find books, manuscripts, maps, photographs, genealogy records, and other information that reveals the history of Passaic County. The Society also hosts an extensive calendar of

lectures, historical presentations, concerts, and several major fundraisers throughout the year.



Lambert Castle, 3 Valley Road Paterson, NJ 07503
(973) 247-0085 • email: info@lambertcastle.org

www.LAMBERTCASTLE.org

ARCHITECTURE MITIGATE MEN
GLANDMARK THE VALUE ADAI
ACTER REUSE HISTORIC ENVI
STEWARDS PRESER CREATIVI
A REMAKING VATION NC
R CONSERVATION CULT
IMUNITY HERITAGE PLACMA
D CREATIVITY LA
ARACTER RESTORATION MEI

THE HISTORIC PRESERVATION GROUP

437 High Street
Burlington, NJ
08016

609 203 7938
sophia.jones@aecom.com

AECOM

Not Just a Museum. An Experience!



www.TuckertonSeaport.org

Exit 58 GSP • 15 Minutes from LBI • 30 Minutes North of AC




Route 35 Shipwreck
Archaeological Field Survey

Craig Johnson, PE, 24GE03157500
Dewberry Engineers Inc., 24GA28047020

www.dewberry.com




Fritz Winterle, CDT
Architectural Consultant
Central/Southern NJ
609.462.8311
FWinterle@supermarvin.com


Jeff Surovi, CSI, CDT
Architectural Consultant
Northeastern PA/Northern NJ
609.224.7042
JSurovi@supermarvin.com

SUPERENTERPRISES
Distributor of MARVIN Window & Door Products

HUNTER RESEARCH
HISTORICAL RESOURCE CONSULTANTS

offering services in:
Historical Research Archaeological Investigations
Architectural Studies Preservation Planning Historic Exhibits
Educational Outreach

120 West State Street Trenton, NJ 08608-1102
phone: 609.695.0122 fax: 609.695.0147
email: hri@hunterresearch.com
www.hunterresearch.com



Mary Delaney Krugman Associates, Inc.
Historic Preservation Consultants
62 Myrtle Avenue
Montclair, NJ 07042
973.746.2810

MDKA
www.mdka.com




Clarke Caton Hintz
Architecture
Planning
Landscape Architecture
Historic Preservation

CCH Offices
Trenton Masonic Temple

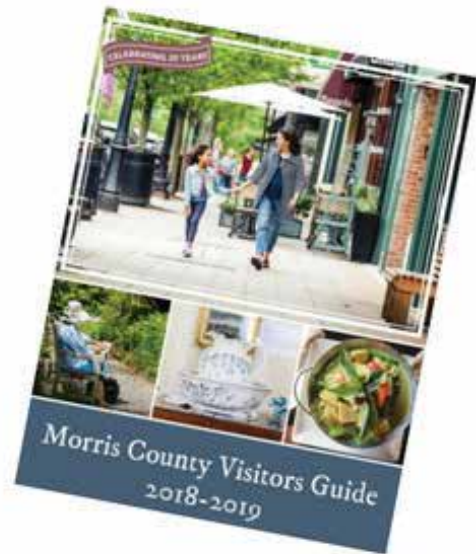
Trenton, NJ | 609.883.8383 | clarkecatonhintz.com




Mills + Schnoering Architects, LLC
Architecture + Historic Preservation
www.msarchitectsllc.com



Order Your
FREE Guide
Today
morrismorism.org

A collage of five architectural images. The largest image on the left shows a two-story stone building with a wooden porch and a chimney. The top right image shows a rustic interior with a wooden table and chairs. The middle right image shows a modern building with large windows. The bottom right image shows a church interior with a large dome and pews. The far right image shows a tall, multi-story stone tower with a flag on top.

HMRARCHITECTS
(609)-452-1070 www.hmr-architects.com

Social media icons for Facebook, Twitter, and Instagram.



Historic
Preservation
Planning

Cultural
Resource
Management

Historic
Architecture
& Design



2 N. Union Avenue
P.O. Box 1726
Cranford, NJ 07016
973-746-4911
www.chhistoricalarchitects.com
Thomas B. Connolly, AIA
Margaret M. Hickey, AIA

**The New Jersey Women's Heritage Trail
includes nearly 100 sites
representing a diversity of themes,
geographical locations, and eras.**



**Explore them all at
www.njwomenshistory.org**



PRESERVATION PARTNERS

Deborah Marquis Kelly and Ellen Freedman Schultz

Funded in part by the "Discover NJ History" License Plate Fund for Heritage Tourism



**WELCOME
CONFEREES TO OUR HISTORIC
CITY OF PATERSON
CELEBRATING 225 YEARS AS
AMERICA'S FIRST PLANNED
INDUSTRIAL CITY.**



**PATERSON'S HISTORIC ROGERS
LOCOMOTIVE WORKS BUILDINGS
REHABILITATED IN 2003 AND 2013
BY NJCDC WITH SUPPORT FROM THE
NEW JERSEY HISTORIC TRUST**

**FRAME FITTING SHOP (1881)
EXTERIOR AND INTERIOR
AND ADMINISTRATION OFFICES**



**STORAGE BUILDING (1881)
EXTERIOR AND INTERIOR**



Revolutionize. Revitalize. Rediscover.

NJ HISTORY



BUY A *DISCOVER NJ HISTORY* LICENSE PLATE AND HELP PRESERVE OUR SPECIAL HERITAGE
WWW.NJHT.ORG/TOURING/LICENSE

East Point Lighthouse
Maurice River Township, NJ
1849

Historic Preservation
Planning, Design, and
Construction Phase Services

MCA
Michael Calafati
Architect, LLC

NJ RA #AI-09029
Certificate of Authorization #AC-845
Exp. 01/2020

609-884-4922
www.calafati.com

*With appreciation to the
NJ Historic Trust,
NJ Historic Preservation Office,
and NJ Historical Commission,
for presenting
“Building a Place for History”*



Dr. and Mrs. Joseph E. Salvatore



LIMEWORKS.us

Building Better With Lime!

As a manufacturer, educator, and mentor in the use of breathable lime mortar, stucco, plaster, and paint, we're bridging the gap between architects, engineers, owners, and practitioners. Our products help process water away from building interiors to extend the service life of historic masonry and sustainable building systems.

www.limeworks.us • 215-536-6706



Phone: (609) 693-9679
Cell: (609) 915-7305



Historical Restoration

2820 Dover Road, Bamber Lake, N.J. 08731

**Thank you to the
NJCDC and
Paterson University
Corps volunteers
for their
assistance at the
conference!**



...The greatest glory
of a building is not in its
stones, nor in its gold.
Its glory is in its Age,
and in that deep sense of
voice fulness, of stern
watching, of mysterious
sympathy...which we feel
in walls that have long
been washed by the passing
waves of humanity.

*John Ruskin,
The Lamp of Memory, 1849*

**James & Janet Foster
NJ Preservation Conference
2018**



David Degling, Owner

15 Herman Drive • Simsbury, CT 06070
860-651-3951 • 1-800-743-6207 • Fax (860) 651-4789
www.stormwindows.com • david@stormwindows.com



**Best Wishes for a successful
2018 Conference from
the Trustees of the
New Jersey Historic Trust**

BUILDING A PLACE FOR HISTORY

2018 Historic Preservation Awards List

Each year the NJ Historic Preservation Office and Historic Sites Council recognize outstanding projects, preservation documents and innovations that represent New Jersey's rich history and preservation excellence. Award winning projects are listed here, and reach more about this year's recipients at the HPO web site: nj.gov/dep/hpo

PROJECTS:

Battery Lewis Restoration | *Atlantic Highlands, Monmouth County*

East Point Lighthouse | *Maurice River Township, Cumberland County*

Hahne & Company Building | *Newark, Essex County*

Building 101 | Roebling Lofts | *Trenton, Mercer County*

INNOVATIONS:

"A Gentleman's Pursuit: The Commodore's Greenhouse"—Historic Morven Inc. | *Princeton, Mercer County*

U.S. Route 206 Bridges Over Stony Brook | *Princeton, Mercer County*

Mauricetown Historic District National Register Nomination | *Mauricetown, Cumberland County*



The conference committee expresses its deep gratitude for the generous support and enthusiasm of the County of Passaic and the City of Paterson that made this year's History and Historic Preservation Conference such a success.

With special acknowledgements to the leadership and staff from:

- **Great Falls National Historical Park—National Park Service**
- **Passaic County Community College**
- **Passaic County Community College Foundation**
- **Paterson Historic Preservation Commission**
- **Paterson Museum**
- **The Hamilton Club**



AIA New Jersey

Established in 1857, the American Institute of Architects (AIA) helps architects serve the public's needs and builds awareness of the role of architects and architecture in American society. With headquarters in Washington, DC, the AIA represents 86,000 licensed architects and associated professionals nationwide.

AIA New Jersey, the statewide chapter of the national AIA, supports its members and promotes the public's understanding of Architecture through Advocacy, Education and Service.

Today, as part of our advocacy, AIA New Jersey is a leader in the effort to see the enactment of an investment tax credit for those who would rehabilitate our older residential and commercial building stock.

With all of our neighbors and the vast majority of states nationwide offering some form of state-level historic preservation tax credit, New Jersey's historic resources are at a severe disadvantage.

The *Historic Property Reinvestment Act (HPRA)*, now pending in the New Jersey Legislature, would:

- Spur redevelopment in older areas
- Create jobs
- Attract new investors to development in New Jersey
- Generate state and local tax revenue
- Promote Smart Growth through livable and authentic communities

Join AIA New Jersey by calling your state legislators today! www.njleg.state.nj.us/members/legsearch.asp

414 Riverview Plaza, Trenton, NJ 08611
info@aia-nj.org
609-393-5690
aia-nj.org

GREETINGS FROM NEW JERSEY:

Popular Culture & The Garden State



Band at the Skateland, Newark. Courtesy of the New Jersey State Archives (New Jersey Writer's Photograph Collection)

Save the Date

2018 NJ History Forum

*Greetings from New Jersey:
Popular Culture & The Garden State*

Friday, November 2, 2018

Monmouth University

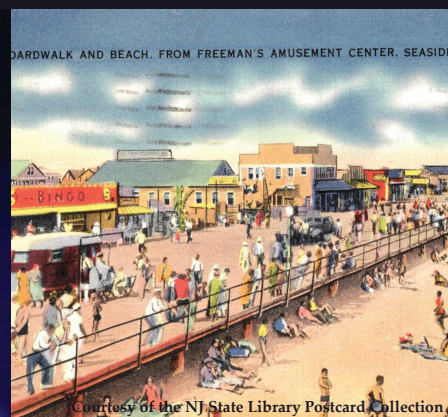
www.nj.gov/state/historical/



NEW JERSEY
Historical
COMMISSION



Courtesy of Far From Heaven (2002), Focus Features



Courtesy of the NJ State Library Postcard Collection